



**Hereford**  
SIXTH FORM COLLEGE

PROSPECTUS 2020





Apply online at  
**[www.hereford.ac.uk](http://www.hereford.ac.uk)**



# Why Choose Us?

**Outstanding Examination Results**

**Widest Choice of Courses**

**Fantastic Range of Enrichment Activities**

**Outstanding Support and Guidance**

**Good Transport Links**

**OFSTED Grades the College Outstanding in All Areas of its Work**

**Students Feel Supported, Achieve Excellent Results and Enjoy Being at College**

**The College has a National Reputation and was named 'Sixth Form College of the Year 2016' by the Times Educational Supplement**

This Prospectus is full of information about the College and its courses. If you would like to find out more you can:

- ▶ check out our website - [www.hereford.ac.uk](http://www.hereford.ac.uk)
- ▶ follow us on Facebook - [www.facebook.com/Herefordsfc](https://www.facebook.com/Herefordsfc)
- ▶ follow us on Instagram - [www.instagram.com/herefordsfc](https://www.instagram.com/herefordsfc)
- ▶ follow us on Twitter - [www.twitter.com/herefordsfc](https://www.twitter.com/herefordsfc)

# A Message from the Principal



I am delighted that you are considering applying to our College. We are very proud of the way our students develop, are supported and challenged, and achieve so well and we hope that you will choose to be part of our success story too.

As the College's Principal, I am honoured to work with a team of outstanding teachers and support staff to ensure that our students get the best possible experience and opportunities.

Hereford Sixth Form College was established in 1973 and has a long history of offering a broad general education in a caring and supportive environment enabling you to gain the qualifications you need to enter higher education or employment.

Facilities are first rate and teaching by experts helps you to learn to take responsibility for your own learning and enjoy your courses.

## **National Recognition**

We have both a local and national reputation for excellence as one of the top sixth form colleges in the country,

recognised in the educational sector when we received the inaugural *Times Educational Supplement's* first Sixth Form College of the Year Award. The College has also retained its Ofsted Outstanding grade for the last 15 years, being the only sixth form college in the West Midlands to have achieved this.

In 2017, the College was asked to lead a regional multi-academy trust and I now have the honour of leading the Heart of Mercia Multi-Academy Trust.

## **High Achievements in All Areas**

We achieve outstanding results and the performance of our top students compares favourably with those students at any state or private school in the country. However, we are a College for all abilities and aptitudes and we are equally as proud of our students who aim to improve their GCSEs and we have seen our success in this area become one of the best in the country.

## **Huge Range of Opportunities**

In addition to academic A Levels, the College offers you a range of vocational qualifications which are highly valued by universities, employers and apprenticeships. Many of these are equivalent to A Levels and you can study a huge variety of A Levels and vocational subjects.

Whilst our results are excellent, we are not an exam factory and all of our students follow a general education programme which prepares you with essential skills and knowledge to maximise your career opportunities. A higher than average number of our students progress to Oxbridge/Russell Group universities and competitive apprenticeships/employment. We also encourage you to participate in an array of enrichment activities, unrivalled in the area, including sports, drama, music and student debates. There really is something for everyone and whether you are a seasoned performer in sport, music, drama or another activity or just a

beginner, we will encourage you.

## **How do we do it?**

Our well qualified and dedicated staff specialise in teaching 16-18 year olds. Our students enjoy learning, socialising and exploring ideas with people of their own age. We have sufficient numbers to make worthwhile teams and groups which allow you to follow shared interests and help you to achieve your best.

Many of our students travel from neighbouring counties and Wales. We do not want the cost of transport to be a barrier to studying with us and travel is subsidised as far as possible. There is also a nearby car park which enables students to park and walk easily to College.

## **Find out more**

This prospectus will help you to find out about courses and the College. We also have a series of open events but we are happy to help you make your choice in any way that we can. We see ourselves as a bridge between school and higher education or employment, where you will make new friends in a caring and vibrant community.

We pride ourselves on providing an outstanding sixth form experience, whether studying A Levels or vocational/applied subjects. Our aim is to help you develop your interests, gain valuable life knowledge and skills and fully achieve your potential through your chosen subjects.

I look forward to welcoming you to the College.

**Peter Cooper**  
Principal

# Contents

<b>Why Choose Us?</b>	<b>1</b>	English Literature	<b>46</b>
<b>A Message from the Principal</b>	<b>2</b>	Environmental Science	<b>47</b>
<b>Contents</b>	<b>3</b>	French	<b>48</b>
<b>Admissions Calendar</b>	<b>4</b>	Geography	<b>49</b>
<b>College Expectations</b>	<b>5</b>	Geology	<b>50</b>
<b>Finance &amp; Travel</b>	<b>6</b>	German	<b>51</b>
<b>Student Well-Being &amp; Support</b>	<b>8</b>	Health & Social Care	<b>52–53</b>
<b>Learning Support</b>	<b>10</b>	History	<b>54–55</b>
<b>Study Support</b>	<b>11</b>	IT – Creating Digital Solutions	<b>56</b>
<b>Careers</b>	<b>12</b>	Law	<b>57</b>
<b>Extension Programmes:</b>		Mathematics	<b>58–59</b>
▶ HE+	<b>13</b>	Media Production	<b>60</b>
▶ REACH Programme	<b>14</b>	Media Studies	<b>61</b>
▶ Extended Project Qualification (EPQ)	<b>15</b>	Music	<b>62</b>
<b>Mathematics for Life (M4L) Programme</b>	<b>16</b>	Musical Theatre	<b>63</b>
<b>Education for Life (E4L) Programme</b>	<b>17</b>	Philosophy & Ethics	<b>64</b>
<b>Drama</b>	<b>18</b>	Physical Education	<b>65</b>
<b>Music</b>	<b>20</b>	Physics	<b>66</b>
<b>Sport</b>	<b>22</b>	Politics	<b>67</b>
<b>The Impact Programme</b>	<b>26</b>	Psychology	<b>68–69</b>
<b>Your Programme of Study</b>	<b>28</b>	Sociology	<b>70</b>
<b>Level 3 Courses:</b>		Spanish	<b>71</b>
Art & Design (Fine Art)	<b>30</b>	Sport & Exercise Science	<b>72–74</b>
Art & Design (Photography)	<b>31</b>	Statistics	<b>75</b>
Biology	<b>32</b>	Travel & Tourism	<b>76</b>
Business	<b>33–35</b>	<b>Level 2 Courses:</b>	
Chemistry	<b>36</b>	Overview of Level 2 Courses	<b>78</b>
Classical Civilisation	<b>37</b>	English Language	<b>79</b>
Computer Games Development & Cyber Security	<b>38</b>	Mathematics	<b>80</b>
Computer Science	<b>39</b>	Other Level 2 Courses	<b>81–83</b>
Criminology	<b>40</b>	<b>Location Map</b>	<b>84</b>
Dance	<b>41</b>	<b>Open Events 2019/20</b>	<b>(inside back cover)</b>
Drama & Theatre Studies	<b>42</b>		
Economics	<b>43</b>		
Engineering	<b>44</b>		
English Language	<b>45</b>		

**Photography Credits:** Thanks to everyone who supplied images for inclusion in our prospectus, in particular, to the lead photographer:  
*Jay Watson Photography* Tel: 01432 347979 Website: [jaywatson.photography](http://jaywatson.photography)

# Admissions Calendar

## Careers and Further Education Evenings

- ▶ From **September 2019** prospectuses are available in partner schools. Prospectuses can also be requested directly from the College or downloaded from the College website.
- ▶ In the **Autumn and Spring terms** College staff visit schools to take part in Careers and Further Education evenings.

## Open Events

- ▶ **Wednesday, 23rd October 2019 (5.00pm - 8.00pm)**
- ▶ **Saturday, 8th February 2020 (9.30am - 12.30pm)**
- ▶ **Thursday, 30th April 2020 (5.30pm - 7.30pm)**

## School Visits

- ▶ In **January 2020** prospective students are invited on a school basis to visit the College and to meet staff and students.

## Submission of Application Forms

- ▶ All applicants should apply directly to the College by filling in the online application form.
- ▶ There will be no closing date for the receipt of applications but we strongly advise you to submit your application by **Friday, 14th February 2020** to ensure the offer of a place in September.

## Interviews

- ▶ Interviews are usually held in partner schools in **March, April and May**.
- ▶ All other applicants are interviewed from **February** onwards.
- ▶ Normally offers of a place at College will be made on receipt of an application.

## Results

- ▶ GCSE results are published on **Thursday, 20th August 2020**.

## Enrolment

- ▶ Enrolment and induction for new students begins on **Tuesday, 25th August 2020**.

# College Expectations

## What you can expect from us

We aim to provide an environment in which you can best achieve your personal goals. At all stages in your College career you may expect full consideration to be given to your personal circumstances. We hope and expect that you will, in turn, behave responsibly and thoughtfully, and make your own contribution to the well-being of the College and the standing it has in the wider community.

We take seriously any issues raised by students, parents and by others about any aspect of the College. If we are not able to solve the problem satisfactorily, there is a formal complaints procedure, details of which can be obtained from the College Reception.



## As a student of Hereford Sixth Form College we expect you to:

- ▶ see classroom attendance as your highest priority and attend punctually all timetabled activities including enrichment activities and appointments with personal tutors.
- ▶ account clearly for any absences or lateness when challenged sensitively and give an explanation at the end of the lesson or another convenient time.
- ▶ complete all work by agreed deadlines and to the best of your ability.
- ▶ take responsibility for your learning and participate actively in all learning activities including the review processes.
- ▶ seek help when you need it and take advantage of the support offered.
- ▶ co-operate with College staff and maintain socially acceptable standards of behaviour.
- ▶ play an active part in Equality and Diversity issues by, for example:
  - not using foul or abusive language or language with any sexist, homophobic, racist or otherwise discriminatory connotation;
  - respecting the rights of others;
  - refusing to take part in behaviour that degrades others - including all forms of bullying;
  - challenging and reporting inappropriate behaviour.
- ▶ involve yourself in wider College activities (e.g. sport, music, drama, debating, volunteering, work experience, subject enrichment, etc.).
- ▶ help to make Hereford Sixth Form College a safe and pleasant place for all.

# Finance & Travel

## 16–19 Bursary Fund for Financial Hardship



This fund is administered by the Student Finance Officer who deals with all cases in a confidential manner. If you have difficulty meeting costs relating to your studies, e.g., books, equipment, transport, trips and visits, you may apply for financial assistance. This fund may also be used in exceptional cases for providing assistance with living expenses. The fund is means-tested, and you will be required to provide documentary evidence of your financial circumstances in order to qualify. Students who are 'looked after', care leavers in receipt of income support and disabled young people in receipt of both Employment Support and Disability Living Allowance may qualify for the full Bursary (currently £1,200).

## College Fund

We invite parents to make a voluntary contribution to the College Fund, currently £75. The fund is used to contribute to activities which are not funded centrally, and to support students in hardship who do not qualify for help from the 16-19 Bursary Fund. It is also used to support some student facilities. The executor is the Principal acting on behalf of the Governing Body.

## Education Maintenance Allowance

Currently this is available to students **whose usual address is in Wales** and whose household income is £20,817 per annum or less if there is one dependent child or £23,077 per annum or less if there are two or more dependent children. Payments of up to £30 per week are paid fortnightly into the student's bank account and are dependant on attendance at all lessons. Full details of how to apply can be found at [www.studentfinancewales.co.uk](http://www.studentfinancewales.co.uk).

**The EMA scheme for students who live in England has now closed.**

## Examinations



No charge is made for examination entries in subjects that you are following as part of your College course unless you fail to achieve certain minimum standards of work and attendance during your period of time in the College. If you wish to sit an examination against the advice of your tutors, or you wish to resit a unit, you will be charged. If you fail, without good reason, to sit an examination for which the College has paid the fees, you will be required to reimburse the College for those fees. Failure to meet a payment deadline will result in an additional late fee.

## Fees

Tuition fees are not payable if you have ordinarily been resident in the United Kingdom for the previous three years (for reasons other than full-time study) and if you are under the age of 19 at the commencement of your course.

Students aged 16-19 from overseas are currently exempt from fees provided that:

- ▶ you are a holder of a full British Citizen passport or are accompanying parents who are holders of full British Citizen passports; or
- ▶ you are a dependant of teachers on exchange schemes; or
- ▶ you are an EU national (or a dependant of EU nationals) and have been ordinarily resident in the EEA (European Economic Area) for the previous three years (for reasons other than full-time study); or
- ▶ you have other Rights of Abode or are accompanying parents who have other Rights of Abode.

If you are an overseas student who does not meet any of the above criteria, you should contact the College for further information.



# Finance & Travel

## Field Trips and Courses



Residential field trips are often organised by departments including, for example, Biology, Business Studies, Geology, Geography and Modern Languages. Some of these study visits may be overseas. Expenditure arising on particular courses is outlined in the course information. Students who have difficulty attending because of financial hardship may be supported through the Student Bursary or College funds depending on their individual circumstances.

## Sports and Performing Arts Academies, Music Scholarships and the Duke of Edinburgh's Gold Award



A parental contribution for students on these programmes is requested. Currently this is £350pa for Duke of Edinburgh's Gold Award, £300pa for Music Scholarships, £300pa for Performing Arts and £300 in the first year and £175 for the second year of the Sports Academies. The contribution is paid termly.

## Students' Cars

Because of a shortage of car parking space, you must not bring a car onto the campus. Drivers of cars parked improperly or without authorisation will receive a parking fine which will be strictly enforced. Parking is available at Aylestone Park, at the bottom of Aylestone Hill as you enter Hereford from Worcester. Permits are available from the College Reception and these must be displayed when the vehicle is parked.

## Students' Property

While all reasonable precautions are taken, the College cannot accept responsibility for the loss of students' property. You are strongly advised to add to your household insurance any valuable items such as bicycles, expensive watches, jewellery and musical instruments. Please be aware that student lockers by the Sports Hall are available at a small charge.

## Travel

Transport passes are available for all students whose resident address is more than three miles from the College. A contribution to transport will be required, which in cases of financial hardship may be supported by the Student Bursary Fund or the Education Maintenance Allowance. The student contribution towards travel is determined by the Local Authority. Please visit the College website for more information.

# Student Well-Being & Support

The College offers a wide range of student support services. These are housed in specialist accommodation, including a Well-Being Centre.

The College takes the well-being of its students very seriously and wants everyone to feel fairly treated and safe at College.

## Counselling and Emotional Support

Confidential counselling and emotional support is available for all students at the College. Talking things over with a Counsellor either as a one-off, or over a number of sessions, can help you to find new ways of dealing with problems, without being judged or told what to do. You might want to talk about College, family life, relationships, feelings of worry, stress or anxiety or about anything that is causing difficulty in your life, however big or small.

If you would like to see a Counsellor you can drop in without an appointment during the lunch break, or you can make an appointment by e-mail, by telephone or by asking a tutor.

## Chaplaincy



Our ecumenical Chaplain is actively involved in the life of the College in various ways. The Chaplain's principal role is to be freely available to all students of any faith or of none, to offer help and advice, support and encouragement. This may be especially helpful at difficult or challenging times when you may have particular problems or concerns you would like to discuss, and these do not need to be limited to spiritual matters only.

The Chaplain also co-ordinates the Christian Union and other student activities.

Through the Chaplaincy we aim to provide you with space and time for reflection and renewal, and opportunities for worship, fellowship, celebration and social action, as well as grappling with the key issues of the day.

If you would like to see the Chaplain, you can drop in without an appointment or you can make an appointment by e-mail.

## Prayer Room

A classroom is available for prayer, meditation and reflection for students of all faiths.

## The Sanctuary

The Sanctuary is a peaceful space in the Well-Being Centre where students can sit quietly when they need a few minutes of calm during the busy College day.

## Student Support Team



The Student Support Team help with general problems and enquiries. They also distribute meal vouchers and deal with lost property. They will assist you if you feel unwell or require first aid.

## Student Well-Being Adviser

Our Well-Being Adviser provides confidential information, advice and support on any personal issue including sexual health and healthy relationships, emotional issues, keeping safe, housing, finance, benefits, smoking cessation advice and legal rights. Drop-in sessions run four days a week without the need for an appointment. Health awareness is also promoted throughout the College year with regular poster displays, information and events on a range of topics.

# Student Well-Being & Support

## Equality & Diversity



We are a diverse community and we are proud of this!

Our country is part of a DEMOCRACY where politicians are elected to vote for LAWS to promote TOLERANCE and protect our LIBERTY. These are the shared values of the College.

Our aim is to advance equality, tackle discrimination and foster good relations in the wider community and you can talk to your Personal Tutor, your Director of Studies or any member of the Well-Being Centre about any of these issues.

There are a number of protected characteristics under the law. We refer to these as **REGARDS**:

- ▶ **Race**
- ▶ **Economic or social background**
- ▶ **Gender, transgender, pregnancy, parenting, marital status**
- ▶ **Age**
- ▶ **Religion or belief**
- ▶ **Disability**
- ▶ **Sexual orientation**



In 2016 we came 24th out of 600 organisations nationally for achieving Investors in Diversity Stage 2 Award. This recognised our ongoing commitment to the principles of equality, diversity and inclusion in order to create a culture of openness and acceptance.

## Tutorial Support



On entry to the College you will be allocated to a Personal Tutor who will be responsible for monitoring your academic progress and welfare, providing you with an excellent source of support throughout your time with us.

The Personal Tutors are managed by three Directors of Studies. Their role is to co-ordinate the work of the Personal Tutors, oversee student programmes and progress and to provide personal welfare and safeguarding support.

The Personal Tutors and Directors of Studies work closely with our well resourced Careers Department as it is important that you can make informed choices and we give high priority to careers guidance. Parents who wish to see a Personal Tutor or Director of Studies, or a member of the Careers Department on behalf of their son or daughter, may arrange a meeting through the College Reception. There are regular Progress Review Evenings at which individual student progress and advice on careers and higher education is given.

You will receive comprehensive information outlining College procedures when you start your courses. Further details are also provided for parents at this time. An induction course for new students is run during the first few days of your time in College.

## Safeguarding

The College is committed to safeguarding and promoting the welfare of its students and staff and expects all members of the College to share this commitment. Hereford Sixth Form College is concerned that all students remain safe and free from harm and we are committed to playing a full and active part in the multi-agency response to safeguarding concerns. The College has detailed safeguarding and child protection policies and procedures which are reviewed annually by the College's Governing Body and can be accessed via the College website or on request from Reception.



# Learning Support

The College welcomes applications from students with a learning difficulty, disability or medical condition and disclosing such information does not affect your application.

We would encourage you to indicate on the application form that you have additional support needs. We can then discuss your support requirements with you.

Our dedicated and highly qualified Learning Support team offers services and support for students with specific learning difficulties, disabilities and long term conditions. They will assess students and arrange appropriate examination access arrangements and support to enable students to achieve their individual learning goals. Typical access arrangements can include:

- ▶ extra time
- ▶ word processing
- ▶ a reader/computer reader
- ▶ a scribe
- ▶ coloured paper

Study support will be tailored to meet your individual needs and can include:

- ▶ examination and revision skills
- ▶ prioritising and organising work
- ▶ communicating your needs to subject tutors
- ▶ transition advice to university, work or further education after College

## Specialist External Support

We have a range of external contacts. For example, if you have a hearing or visual

impairment we can organise specialist help.

## Study Skills

Study Skills sessions are offered to all students at College. These sessions aim to support you if you would like to develop good study habits and manage your own learning.

## Referrals

Students are encouraged to speak to a tutor if they feel they would like to be referred to Learning Support.

If you would like to discuss your Learning Support needs, please ask to speak to Ann Snee, Head of Learning Support.



# Study Support

## IT

The College offers you access to over 1000 computers, laptops and tablets. These are available to all departments across the College campus.

You will have access to an *Office 365* account and this will give you a licence for *Office* products whilst you are studying at the College.

You will have an e-mail account and 1Tb of storage. This is accessible from anywhere with an internet connection.

The College has ample bandwidth for a fast Internet connection. We also offer public WiFi for you to connect your personal devices.



## Library

The Library is a busy, vibrant resource centre at the heart of the College. It is staffed by a team of experienced and approachable librarians who are always on hand to help you find the information you need.

During term time it is open from 8.15am - 5.00pm, Monday - Friday. It offers a wide range of resources to support your studies and a fiction collection for your leisure reading. Resources include books, DVDs, journals, magazines and newspapers, most of which may be borrowed using your College ID card.

The Library subscribes to a number of online resources which are available via the College's Virtual Learning Environment (VLE). These include general reference resources, various newspaper and magazine archives, JSTOR (a database of academic journals) and a broad selection of subject specific resources.

The computers in the Library are available on a drop-in basis and may be used for any College related activities. Laptops are available for short term loan and WiFi is also available to enable use of your own devices.

Various study environments are provided to ensure that you make the best use of your free time. You may choose to work with a friend or in a small group in the Library; on your own in complete silence in the Cloisters or the Silent Study Room or you might prefer the calming atmosphere of the quiet Reading Room or the Study Space.

Additional facilities include black and white and colour printers, scanners and copiers, laminating and binding facilities and the Library shop, which stocks a wide range of stationery and equipment at very competitive prices.

All students automatically become members of the Library at enrolment and an introduction to the facilities and resources will form part of your induction programme during the first few weeks at College.

*"One of the assets of the College that stands out to me is the attitude to learning. I often lack motivation to work and study, but in the Library I am surrounded by friends and workmates deep in study. One can only encourage and be encouraged. Thank you so much for this incredible place."*

# Careers

The Careers Department's role is to help you with your career choices when you leave College whether it's university, a gap year, job or apprenticeship. Well trained and enthusiastic careers tutors ensure that up-to-date information, advice and guidance is readily available when needed.

**Careers Education** covers issues relevant to all students, including university, gap years and the expanding range of apprenticeships which can lead to degree level qualifications.

The Careers Programme is supplemented by a range of other services such as:

- ▶ visiting speakers from universities, industry, the forces and gap year organisations.
- ▶ a trip to a UCAS HE fair.
- ▶ a HE and Gap Year Fair.
- ▶ a **Meet Your Future** convention with representatives from local and national apprenticeship providers and employers and voluntary organisations.



- ▶ mock interviews for university and job applicants.
- ▶ a regularly updated Careers Virtual Learning Environment (VLE).
- ▶ a post results support service in the summer for all Level 2 and 3 students.

In addition, there is a separate programme of support for students applying to Oxbridge, medicine, dentistry and veterinary medicine. Support is also offered to those applying for other competitive degrees including primary teaching, nursing, midwifery and other paramedical careers.



*Representatives from the Royal Navy Submarine Service who gave a talk to students interested in serving*

Work experience and voluntary work are increasingly important, particularly for students applying for jobs and apprenticeships or vocational degrees such as medicine, nursing or teaching. The Work Experience Co-ordinator can help you arrange a placement.

**Careers Guidance** is concerned with an individual's choices. These are explored initially through a one-to-one interview which allows you the opportunity to look at ideas and discuss action planning and goal setting. For those interested in jobs and apprenticeships, the specialist Careers and Work Related Learning Adviser organises workshops and seminars and has long-standing links with local employers and training providers who are keen to recruit young people.

We have a Careers Reference Library which you are encouraged to use in your own time as well as during Careers lessons. We have close links with the main College Library which holds a wide range of careers related material.

Last but not least, the Careers Department recognises the key role parents play in helping you consider the choices you are facing. To keep parents fully informed, careers evenings are held in the Spring and Summer terms and termly newsletters are issued. In addition, parents are very welcome to contact the Careers Department at any time if they would like any further information.



# Extension Programmes – HE+



*Successful Oxbridge applicants 2019*

Although the College is a comprehensive institution, it sets extremely high standards for all of its students and this is reflected in its outstanding value added results.

The extension programmes provided by the College ensure the most able students achieve outstanding results and maximise their chances of progressing to the most competitive entry courses.

- ▶ Annually, over 100 students gain 3 or more A\* or A grades at A Level.
- ▶ The success rate for applications to Oxford or Cambridge is double the national average.
- ▶ Over a third of students applying to HE gain places at Russell Group universities, significantly above national averages.
- ▶ Our top 100 students gained 96.9% A\*/A/B grades, 71.3% A\*/A grades and 38% A\* grades per A Level entry - significantly better than independent schools.

## HE+

Hereford Sixth Form College is the lead college in Herefordshire for the HE+ programme run by Cambridge University in partnership with a group of maintained sector sixth forms; this provides further extension lessons, masterclasses and specialist advice on competitive entry university applications.

# Extension Programmes – REACH

Hereford Sixth Form College encourages and supports academically gifted students to realise their potential to win places at the highest ranked and most competitive universities.

If you are considering applying to the universities of Oxford or Cambridge or for other competitive courses (including medicine, dentistry and veterinary science) we provide a programme of dedicated advice and support through our REACH programme, which is a bespoke programme designed for our high achievers, of one hour a week, timetabled from January of Year One. These lessons include:

- ▶ workshops on the application progress to give personalised support to our most able.
- ▶ subject enhancement - support with super curricular extension activities to demonstrate candidates' potential for academic excellence in their chosen subjects.
- ▶ preparation for universities' own Admissions Tests or Thinking Skills Assessments: an increasingly common requirement for Higher Tariff (Russell Group) universities.
- ▶ intensive interview preparation and presentational skills training.
- ▶ using our close working relationships with Oxbridge colleges' schools liaison officers and admissions teams; admissions tutors come and deliver sessions on personal statement writing and interviews at the College.
- ▶ privileged access to universities "widening participation" initiatives available only to the maintained sector.
- ▶ tutoring for the STEP tests for Mathematics.
- ▶ specialist careers support from our staff, but also support from our increasingly successful alumni.
- ▶ access to a range of international opportunities, including: Sutton Trust US and UK, Villiers Park, UNIQ, HE+ (run at the College), CanBridge, summer schools, etc.

Participants in the programme who do not go on to Oxbridge nevertheless gain valuable experience and most win places at Russell Group universities. The programme also supports you if you are considering applying to universities in the USA, Ireland or Continental Europe.



# Extension Programmes – EPQ

Examination Board: AQA

The Extended Project Qualification (EPQ) is a stand alone qualification equivalent to half an A Level. It aims to give you an opportunity to:

- ▶ demonstrate independent research skills.
- ▶ choose a topic you are excited or passionate about.
- ▶ create a piece of extended writing or complete an artefact, for example, art / invention / music.

The College has previously seen a high percentage of A\* grades and an EPQ is highly recommended for a university/job interview as it demonstrates the ability to write and reference academically and that you have a passion for your subject area.

## What do I have to do?

Either: 5000 word research essay plus production log (filled in at every step in the process to show your journey) and a 10 minute presentation with questions.

Or: Artefact (e.g.: artwork, dance, model etc) plus 1000 word research essay plus production log (filled in at every step in the process to show your journey) and a 10 minute presentation with questions

## How much is it worth?

The EPQ is worth up to 28 UCAS points for an A\*.

## Can I really do a project on anything?

Yes. We have had projects on dairy farming, guitars and furniture restoration. A good project requires passion and doing it on something you are interested in is really important. The skills you learn (research, time management, planning, etc) are transferable and useful at university and in employment.

Your project must have a research element, however. You must be able to show your learning curve and make sure your project is analytical.



Even with an artefact (thing you create) you will need to write 1000 words on your research.

## How long does it take to do a project?

Longer than you think. In total, 120 hours are allotted: 30 'taught' hours and 90 self-guided hours.

## When are the submission dates?

In November and May – but you can complete a project at any time, it just won't be submitted until either of these dates.

## Will it help my university application?

Universities and employers welcome the Extended Project because it mirrors the independent style of learning required for success at degree level and in the workplace. It could also tip the scales to get you into your chosen university on results day.



# Mathematics for Life

Examination Board: AQA



After a successful trial in 2018-2019 the College took the innovative step of encouraging all first year students to study Mathematics as part of their programme of study.

The purpose of this was to complement and support core subject choices as well as providing life and employability skills. This means that if you are not taking A Level *Mathematics* or *Statistics* or retaking GCSE *Mathematics*, you will be enrolled in *Mathematics for Life*, a Level 3 qualification in Mathematics.

The qualification that *Mathematics for Life* follows was developed by the government in response to concerns from universities and employers that students who didn't continue with mathematics after their GCSE examinations were not prepared for continuing education or employment.

The course is, therefore, well supported and is recognised by employers and universities. It is equivalent to an AS in *Mathematics* and carries the same UCAS points. Throughout the trial feedback from students has been very positive,

with highlights being that it helped with other courses, provided additional mathematical knowledge that they could apply outside the classroom and gave them a valuable additional qualification to help their CV or university application stand out.

Importantly, *Mathematics for Life* is specifically designed to support the mathematics content in non-mathematics A Levels; 10% of many A Levels are now mathematics based (for example, *Psychology*, *Biology*, *Environmental Science* and *PE* all have mathematics as 10% of their course).

## What do I have to do?

*Mathematics for Life* is a one year course taught over two hours per week. Short homework assignments are set every week which are designed to take about 30 minutes and are practice, study or research based.

## What is the qualification title?

Level 3 Certificate in *Mathematical Studies*. The examination board is AQA.

## How is it assessed?

There are two examinations at the end of the year, both are 90 minutes long and you can use a calculator in both.

Both examinations have 'preliminary material' that's released in March where real-life examples of data and information are given to students that are then used as the basis of questions in the examination.

## What will I study?

The focus is on applied mathematics - there is no algebra or trigonometry. Everything is put into context and applied to real-life examples. Topics include *Financial Mathematics*, *Modelling*, *Probabilities*, *Collecting & Analysing Data* and *Finding Patterns in Data*. An example questions might be, "Work out the income tax, national insurance and student loan repayments for someone earning £52,000".

## What support is available?

You will be taught by a specialist teacher and will have course specific textbooks for use in class. All lessons, resources and homework will be available on the VLE and there will be weekly lunchtime workshops where it will be possible to get support.

# Education for Life

This course offers you important advice about the College, studying, careers and life skills. A central feature is to make you sure you know what support is available, both in College and through external organisations, so that you will always know how to get help if you need it.

The course is delivered through PowerPoint, video, research online, questionnaires, group work, class discussion and independent study. **This is a compulsory, one hour a week programme for all students.**

## What does the course involve?

### *IT Induction*

An introduction to the College IT systems including how to use the Student Portal, the IT User Agreement, Internet Safety and accessing the Impact Hub (an area of the student portal where students can research and sign up for College sport, enrichment and careers opportunities).

### *Library Induction*

An introduction to the College Library systems, expectations and resource availability.

### *British Values and the Prevent Programme*

An exploration of our shared values of Democracy, Rule of Law, Liberty and Tolerance. We outline the Government's PREVENT strategy and explain how our SHARED VALUES can help PREVENT extremist or terrorist behaviour.

### *Internet Safety*

This part of the course discusses contact (the dangers of talking to people we don't know on the Internet); content (making sure we are aware of the law with reference to what we can/should post, like or share online); conduct (including cyber-bullying); and commerce (phishing attacks, making devices safe, using strong passwords, online gambling, scams).

### *Alcohol and Drugs Awareness*

Understanding the law, harmful effects, issues around drink and drug driving, College policy on possession of and use of alcohol/drugs in College.



### *Emotional Well-Being*

A discussion of what it is, what affects it, how it can be stigmatised and how can we look after our own emotional well-being.

### *Sexual Health*

The focus is on sexually transmitted infections. What are they? What are the symptoms? How can they be treated? How can we protect ourselves from them? The lesson is inclusive of all types of relationships and does include information on how to access contraception and emergency contraception.

### *Safe Relationships*

We explore attitudes towards relationships, boundaries, acceptable behaviours, relationship abuse and child sexual exploitation.

### *E-Driver*

This is a hard hitting programme exploring our responsibilities as a driver and as a passenger.

### *Exam Anxiety*

Demystifying the exam hall, reducing negative self-talk, self-care. This part of

the course includes relaxation techniques and strategies to control and reduce anxiety.

### *Healthy Living*

An exploration of the importance of healthy eating and exercise to promote emotional and physical well-being.

### *Study Skills*

Looking at College expectations about studying, the importance of classwork, homework and directed learning. Revision strategies; including revision planning, organisation and memory aids.

### *Careers*

Here we explore the options available to you after leaving College, including HE, Jobs, Apprenticeships and Gap Years. You will find out more about student finance, how to research career options and where to get help.

# Drama

Drama is a central part of student life at Hereford Sixth Form College, with at least 250 students involved in some form of Performing Arts across the College. All students have the opportunity to get involved in a constant programme of Drama and Musical Theatre performances. Whether it is acting, directing, singing, dancing, lighting, sound, set design or costume and make-up, there are opportunities for everyone.



Hereford Sixth Form College has its own highly acclaimed theatre company, *Upstage Productions*, which is run by a committee of students taking responsibility for the planning and running of all College Drama and Musical Theatre events. The committee is open for all students to join and membership is an excellent addition to your CV. *Upstage* is constantly looking to train new stage managers, publicity teams, finance officers, ticket and poster designers, front of house teams, costume and make-up teams and technical crew.



There are a large number of productions each year. During the Autumn Term the College musical or one of Shakespeare's plays will take place with a cast, orchestra and crew of approximately 100 students. *Upstage* produce smaller scale productions during

other terms and there are constant showcase evenings of Drama, Dance and Musical Theatre work created by students.

For those interested in the technical side of theatre, there is the opportunity to join the Upstage Tech Crew, which will provide training on our professional standard intelligent lighting, sound equipment, ladder and tower training. Many Tech students have gone on to technical theatre degrees at the most prestigious drama schools and work in the West End.

Recent College productions have included, in College and in venues locally, *Avenue Q* (Schools Edition), *The Void*, *Much Ado About Nothing*, *Skirrid Hill*, *Macbeth*, *Our Town*, *Guys and Dolls*, *Romeo and Juliet* (in Hereford Cathedral), *Sweeney Todd*, *Jesus Christ Superstar*, *Cabaret*, *The American Musicals Showcase*, *Under Milk Wood*, *Cider with Rosie*, *The Trial* and *Teechers*.



Student directors working with Upstage have recently produced *Girls Like That*, *The Man Who*, *Darkness in the Night* and also *Black Comedy*. Auditions for all of these productions, musicals and plays are open to all students, regardless of experience. It is the aim of Drama and Performing Arts at Hereford Sixth Form College to get as many students involved in as wide a range of productions and events as possible. Come along and give it a go.





# Drama

## The Performing Arts Academy and National Youth Theatre Auditions

The Performing Arts Academy (PAA) is an opportunity for students who are starting to think more seriously about Drama and Musical Theatre skills and may be considering the Performing Arts as a potential career choice.

The Academy is through audition only and those who gain a place are allocated extra lessons to work with our coaches to receive specialist acting training.

You do not have to be a Drama & Theatre Studies student in order to audition for the Performing Arts Academy. All PAA students have the opportunity to be entered for LAMDA Grade examinations. PAA students will also be offered training for auditions for drama schools and upcoming productions. Students also receive workshops from outside specialists from drama schools about audition technique, voice work and have even been auditioned for drama school places at the College.

The Performing Arts Academy offers all of its members a formal training process for National Youth Theatre (NYT) auditions and more students audition from Hereford Sixth Form College for the National Youth Theatre than any other school or college. Hereford Sixth Form College also has a significantly higher success rate for NYT auditions than any other school or college and this reflects the dedication of PAA students and the quality of the training they receive. PAA students have consistent success in gaining places at drama schools. There is a fee for the PAA and bursaries are available for those in financial difficulty.

If you are interested in finding out more about the PAA, *Upstage Productions* or extra-curricular Drama and Musical Theatre, please contact the Drama & Theatre Studies Department directly.



*Claire Llewellyn of Rc-Annie, a professional dramatic violence company, giving instruction on sword handling during a stage combat workshop*

# Music

Concert performances are a significant part of College life. Not only do we produce a range of in-house recitals and concerts, but we frequently perform in some of the best venues locally and abroad. There are regular international tours and we aim to provide a challenging and inspiring approach to performance training while giving opportunities to students of all abilities and experience.



We have links with professional musicians, both local and international, and provide connections between students, universities and industries throughout the year. There is a programme of trips to professional concert halls and you have the opportunity to see the work of some of the best musicians and ensembles. We provide substantial support to students aiming to apply to music colleges and universities.



*Lunchtime Recital with professional musician, Liam Dunachie, pianist, jazz organist, composer and arranger*

The College believes in an educational environment that encourages you to understand your own potential and to commit to the challenges of advanced performance. Through our programme of clubs and ensembles there are opportunities for all students in College (whether or not you are studying Music) to

be creative, challenged and inspired, regardless of your previous experiences.

Any student, whether studying music or not, who is interested in being involved, should look for notices around the College and on the Student Portal or see the Head of Music.



## Music Scholarships

Music scholarships are awarded to students who pass an audition and who are prepared to commit to a programme of advanced specialist training. Any student can apply for these scholarships, whether or not you are studying Music. If you would like further information about applying for any of these awards, please contact the College for a scholarship application pack. Further details can be found on the College website along with a downloadable scholarship application form.

Music tuition is offered at a highly subsidised rate, to all students at College, catering for beginners right up to Grade 8. Students should refer to the Student Portal or contact the Head of Music.

## Music Theory Classes

Music Theory classes are open to all students who would like to develop music reading and writing skills in a supportive environment. Activities are manageable and students work at their own pace. These classes are recommended for students studying Music but they are open to all College students. You are submitted for graded exams with the Associated Board of the Royal Schools of Music and gain UCAS points for the higher grades.

# Music

## Academia Musica Choir

The Academia Musica Choir takes pride in its rapidly expanding reputation both in Hereford and further afield. By adopting a fast turnover of music, the Choir is able to sing Choral Evensong in Hereford approximately 20 times per year, as well as services further afield, including Worcester Cathedral and Tewkesbury Abbey of late. The Choir is approached through the year to take part in special services and concerts across the county and 2018/19 saw performances alongside a Russian professional choir, the English Symphony Orchestra and a concert conducted by world famous conductor, Carl Davis, as well as a Carol Service attended by HRH The Princess Royal.

The innovative training programme gives the scholars opportunities that give them a headstart when applying for scholarships at cathedrals and universities during their undergraduate training and a number of recent scholars are now singing with choirs around the country including Merton College, Oxford. The Choir is directed by Jon Weller, Head of Music, and supported by other professional and semi-professional singers who mentor the students.

## Academia Musica Instrumental Scholars

The Instrumental Scholarship Programme focuses on chamber music. This enables the students to work together in small groups, mentored by professional music staff, to produce a programme twice a year of chamber music.

This is continually developing in diversity and last year saw a Jazz group as well as Rock and Pop, in addition to the current classical set-up of string quartets and woodwind groups.

The scholars also have workshops and masterclasses throughout the year, as well as specialist lessons to help prepare for this programme.





# Sport



## Sports Academies

On Wednesday afternoons, you can take part in a range of competitive team games. Team trials (with first, second and even third teams) are open to all students and we provide a full fixture list. We also actively encourage you to attend representative trials; many of our students gain county caps and perform well at national level.

Our sports centre is open to all students and provides excellent facilities, including a purpose built and a fully staffed fitness centre (Sixth Sense).

Hereford Sixth Form College is extremely proud of its academies which represent the College throughout the country. All five academies compete in the Association of Colleges Sport Leagues with regular fixtures, tournaments and training dates. There is a fee for membership of the academies (to assist with provision of kit, transport, insurance, etc.). For further details, please refer to the College's Sport Facebook pages.

## Basketball Academy



The Basketball Academy has been highly successful since its start in 2010/11. The squad won the BCS Men's League for the West Midlands in their first season. In 2015 they were Regional Cup Finalists and in 2018-19 they reached the National Quarter Final of the AoC Sport Cup and were league runners up.

The Academy welcomes both male and female players, providing all members with quality coaching from experienced basketball players.

The Academy trains twice a week and competes within the AoC Sport West Midlands competition every Wednesday afternoon. The first team also enter the AoC Sport National Cup.

The Academy has direct links with the West Midland Regional Programme as well as premier and conference national league clubs.

Members of the Academy receive free membership of Sixth Sense in addition to a range of coaching and officiating opportunities.

Player progression is closely monitored and students have the opportunity to attend basketball camps - recent tours have taken them to Malta and Italy.

**Facebook:** [www.facebook.com/HSFCBasketballAcademy](https://www.facebook.com/HSFCBasketballAcademy)



# Sport

## Football Academy



Since its grand unveiling by Sir Trevor Brooking, the Football Academy has worked to aid player development with individual skills and tactical awareness of the game. The Academy caters for two successful male squads and one very successful female squad, with an intake each year in excess of 65 students.

The Academy brings with it not only personal development but also a high level of competition and opportunities. The Academy has many club links in and around the local community, especially with Westfields FC, which is home to our games.

The first team enter the ECFA National Cup and the AoC National Cup. In 2015 the men's team went to Lake Garda, Italy, where they were unbeaten. In the summer of 2017, both the men's and women's squads returned to Italy for more tour action.

Player development is a key component in the Academy ethos. The first team competes in the AoC Category 2 League for the West Midlands featuring opposition such as Cirencester, Hartpury, Kidderminster and Worcester. The team have finished in the top three for the past five seasons. The second team plays in the AoC Category 3 League for the West Midlands featuring opposition such as Solihull, Halesowen and Bournville.

The women's team also play in Category 3 for the West Midlands, in which they won the league in 2016. Teams in this League include Hartpury, Solihull, Worcester and Shrewsbury.

Recently, the Academy has enjoyed individual success with many players, both male and female, being offered scholarships with American universities.

The Academy assists students in progressing into Higher Education football or playing with local clubs who compete in the West Midlands league structure.

**Facebook:** [www.facebook.com/HSFCFootballAcademy](http://www.facebook.com/HSFCFootballAcademy)

## Hockey Academy



The women's squad has represented the West Midlands at the AoC National Finals five times in the past five years, finishing third in 2015 and fifth in 2017 and 2018.

We also play a number of local schools and sixth form colleges and have represented Herefordshire at the West of England competition for the last three years.

Students are expected to commit fully to the coaching sessions and to be able to play in competitive games on Wednesday afternoons.

Boys play in the AoC Sport Midlands Boys League and in the AoC Cup and the girls play in the AoC Cup, Regional Tournament and regular fixtures with teams from the West Midlands.

Mixed teams play in the AoC Sport Midlands Mixed League and Cup as well as a number of independent tournaments.

In 2019, the mixed team got through to the quarter final of the National Cup.

All Academy players are given membership of Sixth Sense and have weekly academy fitness sessions. Player performance is closely monitored.

**Facebook:** [www.facebook.com/HSFHockeyAcademy](http://www.facebook.com/HSFHockeyAcademy)

# Sport

## Netball Academy



The Netball Academy is designed to give students the opportunity to develop their Netball skills whilst also undertaking an academic programme.

During a week there are two practical sessions where players can work on their technical and tactical skills and an Academy fitness session where all aspects of fitness are worked on. As well as this all Academy members are given a membership to Sixth Sense Gym where they can continue to work on their fitness in their own time.

Members of the Academy are required to commit to these sessions as personal performance is monitored closely throughout the season.

College fixtures take place on a Wednesday afternoon where three teams travel across the West Midlands competing in the AoCSport leagues. As well as this we have other teams who compete in regular fixtures in a Herefordshire U18s League. The first and second teams also get entered into the AoCSport National Cup competition.

The Academy has qualified to compete in the West Midlands Schools Regional Tournament for over ten years and are also entered into the AoCSport Regional Tournament during the year.

The Academy aims to provide Netball at a level which is suitable for all players and hopes to progress players into playing outside of the College setting.

**Facebook:** [www.facebook.com/HSFCNetballAcademy](https://www.facebook.com/HSFCNetballAcademy)

## Rugby Academy



The Rugby Academy is a partnership between the College, Luctonians RFC and Hereford RFC and is designed to give you access to high level coaching and competition with a view to developing your individual rugby talents. The Academy has grown significantly since 2000 and regularly enrolls in excess of 50 players. The playing standard has improved dramatically and the team competes well with nationally recognised establishments and has made good progress in national competitions. Individual players have progressed into the Herefordshire, North Midlands, Midlands and Premier Academy squads.

The season is structured to provide competitive opportunities but also ample opportunity for individual player development. Players are involved in two coaching sessions per week and are expected to commit fully to the Wednesday afternoon fixture programme. In addition, players receive free membership of Sixth Sense and are expected to attend an Academy fitness session on a Friday. Players also have access to a 3G pitch on site.

The Academy has won the AoCSport West Midlands Performance League for five out of the last six years and the squads have been going on tour to South Africa every other year since 2009.

In 2018/19 the Sevens squad qualified for the AoC National Championships by winning the regional tournament and finished a very creditable fourth place.

The main goal of the Academy is to provide a rugby education which creates a platform for players to progress into the adult game and enjoy rugby outside an educational setting.

**Facebook:** [www.facebook.com/HSFCRugbyAcademy](https://www.facebook.com/HSFCRugbyAcademy)  
**Twitter:** [@HSFCRugby](https://twitter.com/HSFCRugby)

# Sport



The continued growth and success of Physical Education and Sport at Hereford Sixth Form College has resulted in a significant increase in the number of elite performers studying courses at the College. In order to try and support the differing needs of these athletes we have developed an Elite Athlete Support Programme.

The programme is designed to try and help these athletes achieve their full sporting potential whilst also ensuring that chances of academic success are maximised. Athletes will need to apply to access elements of the programme detailed below.

## **Fitness Scheduling**

Athletes will receive free full membership of Sixth Sense. There will be opportunities for coaches to discuss specific training requirements with Sixth Sense and programmes can be individually designed and implemented with full support from Sixth Sense staff.

## **Online Resources**

Where athletes are required to have extended time away from College to train or compete, online resources will be made available to help support academic courses.

## **Support Workshops**

Athletes who miss some element of their academic programme as a result of their sporting commitments will have opportunities to revisit work through a range of additional academic workshops.

## **Individualised Timetables**

Where possible, athletes will be able to customise timetables to ensure that the impact of regular commitments is minimised. Individual requirements will be taken into account when planning courses and it may be possible to streamline some elements of a programme.

## **Physiotherapy/Sports Therapy**

If an athlete is injured and requires access to specialist rehabilitation there is provision for this to be accessed and provided locally through partner service providers. This means athletes can manage their rehabilitation with less impact on their academic studies.

## **Financial Support**

Where athletes are representing the College there will be some financial assistance to help cover associated costs.

## **Kit Package**

Athletes will be provided with a kit package through O'Neills Sport.

## **Mentoring**

All athletes will have access to a mentor based within the Physical Education Department who will be available to provide one-to-one athlete support. This support is aimed at helping athletes cope with any pressures which develop throughout their time at the College.

## **Communication**

Athletes and parents will have a dedicated contact at the College who will provide an easy communication route. There will be a dedicated Facebook page where elite athletes can help support each other and where important information can be posted both during and outside of the College day.

## **Profiling**

The College will aim to raise the profile of athletes on the programme by ensuring local press coverage and by developing a dedicated area on the College website to elite performance.

Athletes who wish to apply for the programme or who would like to discuss it further are asked to contact Andy Douthwaite on 01432 346906 or e-mail [ad@hereford.ac.uk](mailto:ad@hereford.ac.uk)

**Facebook:** [www.facebook.com/HSFC-Elite-Athlete-Support-Programme](https://www.facebook.com/HSFC-Elite-Athlete-Support-Programme)

# Impact Programme



As universities and employers demand more from students within interviews and applications, it has become very important to broaden your horizons as part of your short time here at College. The Impact Programme is designed to underpin a foundation of great education with a wide array of opportunities to **IMPACT** on your **HEALTH**, **SOCIABILITY**, **EDUCATION**, **CAREER** and **LIFE**, thus enhancing your employability and enriching your College experience alongside your studies. Here are just a few examples of the activities you can get involved in:

## allActive



We encourage all students to lead a healthy lifestyle and take part in sport, whatever your ability or interest. allActive is an initiative encompassing extra curricular sport, intra and inter College competition, leadership and sport volunteering opportunities.

A programme of sports including badminton, fencing, five-a-side football, tennis, table tennis, trampolining, volleyball and dance takes place during lunchtimes and after College, with sports changing every half term.

Don't be deterred if there is nothing of immediate interest; we want you to let us know what activities you would like to see running.

## The Debating Society



Now in it's 13th year, this is one of the largest and most popular groups in College with up to 400 students in attendance. It acts as a cross College forum for students and external speakers to discuss and debate a wide range of contemporary academic, political, social, ethical and moral issues. Participation has notable personal and career benefits for students. It develops confidence, public speaking ability, analytical thinking and knowledge of current affairs. It is particularly advantageous for those intending to progress to higher education and for those wishing to follow careers in the armed forces, journalism, media management, law and teaching.

## Environment Group



The Environment Group meets weekly and covers environmental issues through discussions, watching films and organising activities. Topics are largely suggested by students and the activities are student-led. Activities might include:

- ▶ visiting speakers from an environmental campaign group.
- ▶ organising cake or craft sales to raise money for a wildlife charity.
- ▶ a *Make Do & Mend* event.
- ▶ a clothes swap.
- ▶ planting seeds.
- ▶ raising awareness of climate change.
- ▶ a display or film on the impact of what we eat on the environment.



# Impact Programme

## Duke of Edinburgh's Gold Award (DofE)



At a time when entry to universities and the workplace is becoming more and more competitive, you will need more than just good grades to achieve your ambitions. Employers and admissions tutors are looking for qualified people with extra qualities - the non-academic achievements that show you have a positive attitude, are self-motivated and adaptable and have skills in problem solving, teamwork and communication. A Gold Duke of Edinburgh's Award is a great way of demonstrating that you have all these extra skills.

But the DofE is more than just a qualification. Everyone gets different things out of their Award because you get to choose the activities you follow in most of the sections and you set the goals you want to reach. In following the DofE programme you will challenge yourself, enjoy loads of new experiences and discover talents you never thought you had. Anyone can take part - you do not need any experience or special qualifications, just a willingness to have a go.

## Student Representative Council (SRC)



The Student Representative Council (SRC) allows you to become involved in the planning and co-ordination of all aspects of student affairs including student welfare, amenities and social activities.

Recently the SRC has engaged in securing improvements to the catering provision and working with College staff in both curriculum and campus developments. We have engaged in major fundraising for local and national charities and organised social events for students.

You will present the views of the students to the Principal and deal with requests from students on a wide variety of issues. You will also liaise with other student councils and with the National Union of Students regarding a variety of issues relating to the development of young people.

The SRC allows you to develop the skills of leadership, teamwork, responsibility and service to others. All students are able to purchase an NUS EXTRA card online, which affords a wide range of discounts on a variety of products and services.

## The Student Voice and Media & Journalism Course



*The Student Voice* is the College student newspaper. *The Student Voice* team meets regularly and plans, designs and writes the entire publication. There are student editors and a team of students who write a wide range of articles. There are regular features (for instance, book and music reviews) alongside pieces on issues of current interest. Many of the team members go on to study journalism in higher education and the experience of working on the *The Student Voice* provides excellent portfolio evidence.

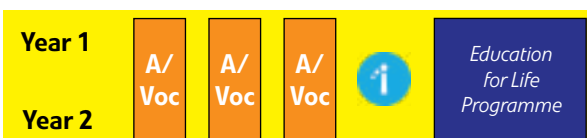
The Media & Journalism course is a practical programme intended to give students a taste for the "real world" cutting edge of modern print, radio and TV journalism. It is based around a programme of external speakers who are experts in their respective fields in national, regional and local media. Past guests have included Kevin Backhurst, Controller of the BBC News Channel; Dave Howard, BBC Journalist and Producer; Nicola Goodwin, BBC Hereford & Worcester; Adam Cuminsky, Senior Producer of the Radio 4 Today Programme and Sally Watson, Planning Editor, BBC Breakfast. With this guidance, students will produce a portfolio of written work which will be published through *The Student Voice*.

# Your Programme of Study

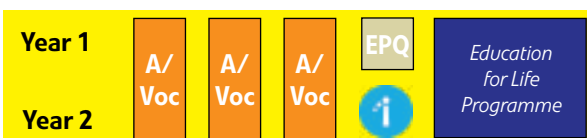
## Typical Student Programmes

### Level 3 – Post GCSE

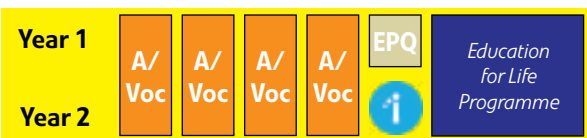
These should be viewed as two year programmes. During this time you will follow 3 or 4 subjects over the two years, together with the *Impact* programme and the *Education 4 Life* programme, developing employability and life skills.



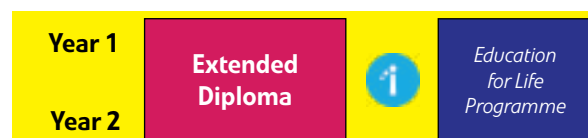
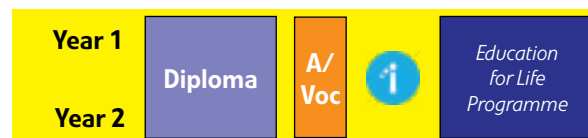
In addition, you can follow an Extended Project Qualification (EPQ). This gives you specialist project knowledge in a chosen subject and project co-ordination skills.



Students with average GCSE scores of above 7 should consider taking 4 subjects, providing additional breadth.



Some of the vocational courses offered are equivalent to 2 or 3 A Levels e.g. BTEC National Diploma in Health & Social Care (2), BTEC National Diploma in Travel & Tourism (2) and BTEC National Extended Diploma Sport & Exercise Science (3).



Students who do not achieve the required English or Mathematics grades must continue to study the subject until they have achieved this.

**In general, a student studying at A Level or a vocational programme will be expected to have achieved at least five GCSEs at grades 4-9 or A\*-C including English Language.**

### Level 2 Courses – GCSE Equivalents

All students need to achieve the equivalent of four GCSEs including English and Mathematics. We run an excellent Level 2 programme giving a range of options not available in many schools, supporting progression on to further education or employment.



These can lead to an A Level or Vocational course at Level 3 in the second year.

### Impact Programme

The College has a reputation for its excellent enrichment activities available to all students. You will be encouraged to participate in the *Impact* programme which covers a variety of these, for example: the Debating Society, Drama, the Duke of Edinburgh's Gold Award scheme, Music, Sports and Young Enterprise. Please see pages 26-27 for more details of the *Impact* programme.

### Education for Life and Mathematics for Life

The *Education for Life* programme comprises topics to promote your personal well-being, careers education and employability skills. We believe continuing to study Mathematics at Level 3 is beneficial for both employability and navigating adult life, and we strongly encourage all students not studying a Mathematics-based A Level to study *Mathematics for Life* in Year One, leading to an AS sized qualification in core Mathematics.

### REACH Programme

REACH is a bespoke programme for our high flyers working with the universities of Oxford and Cambridge to improve widening participation (see p14).

### Extended Project Qualification (EPQ)

The EPQ is recognised as half an A Level. Students explore and research in detail an area of interest, produce a thesis and deliver a presentation on their chosen subject (see p15).

### Our List of Courses

The course pages give a profile of the courses we expect to offer in 2020 with an indication of the course requirements we generally expect for success. Courses also rely on a minimum number of recruits in order to run. Please check the website for the most up-to-date information.



## Level 3 Courses



# Art & Design (Fine Art)

Examination Board: OCR



## What does the course involve?

We offer at A Level a specialist course in Fine Art, completed over two years.

The course involves drawing, painting, printmaking, mixed media, photography and studying the work of artists from different times and cultures.

During the first year the emphasis is upon developing practical skills through a tutor led series of projects. This is in preparation for the individual specialist project in the second part of the first year.

In Year Two you will undertake an assessed coursework project that involves producing **both** a portfolio of practical work and a written related study. These two parts count for 60% of the total A Level mark.

The remaining 40% of the marks are from the Externally Set Task (examination). Preparation for this is started in February and leads to a 15 hour examination.

At the start of the course you will be required to purchase a Department kit of materials, though the Department

will provide you with most of what you need to produce your own work. Support materials are provided. Students are also expected to have, or have access to, a digital camera, iPod, iPhone or similar, capable of being used with downloadable Apps.

You can get a good idea of the range and scope of the Art course by visiting one of the College open events. You may also call in at other times and ask to see students work.

Art may be studied alongside any other subject including Photography, which may suit you if you know you would like to follow a specialist career in Art & Design or Photography. This option does involve a large amount of coursework.

## Do I need any particular subjects, skills or interests?

If taken, a grade 4 or C in GCSE Art is required but a keen interest in the subject is essential. If you haven't taken GCSE Art you will need a grade 5 or B in GCSE English. You may be required to complete a probationary period or be advised individually if you have not achieved a 5 in Art.

You will have four lessons each week and, in addition, you are required to do a further four hours homework/independent study and attend specialist workshops.

## Will I take part in any study visits/fieldwork?

The Department offers visits to both local and national galleries for all students. Potential visits include a London residential and day trips to Oxford and Liverpool (to be confirmed).

You are required to see first hand the artworks chosen for your written related study in Year Two.

## What can I do after the course?

Many of our students progress to art foundation courses at various art colleges/universities and then on to a wide range of specialist art degree courses. Hereford College of Arts offers a bursary to students who successfully apply to their degree level courses.

Potential disciplines include:

- ▶ Film
- ▶ Painting and Drawing
- ▶ Photography
- ▶ Printmaking
- ▶ Sculpture and Installation
- ▶ Textiles

Potential career paths include:

- ▶ Architect
- ▶ Art Curator / Museum Educator
- ▶ Art Historian
- ▶ Artist
- ▶ Designer
- ▶ Illustrator
- ▶ Set Designer



# Art & Design (Photography)

Examination Board: OCR

## What does the course involve?

Photography is an Art & Design course, although the focus is on lens based work and the endorsement will be in Photography. The emphasis of the practical work is to employ creative approaches which could also include work in other Art disciplines. First year work focuses upon skills and research, whilst in the second year the emphasis is upon individual ideas and interests. In addition to the practical element the course requires the research and critical evaluation, in written form, of the work of photographers and other artists. These creative investigations allow a greater understanding of the role of Photography within society and the importance of the photograph as a cultural artefact.

This is a predominantly coursework subject consisting of:

### Year One: *Portfolio*

This will comprise work recording and presenting your practical work and your research into different photographers/artists. The Portfolio will be used as a means of skills building in preparation for Year Two.

### Year Two: *Personal Investigation*

For this unit, you choose the theme or topic that you wish to follow, building upon the previous year's work. In this unit you are required to create more mature resolved work and write a personal study of at least 1,000 words. In this you may focus on the work of individual artists reflecting on the social, cultural and historical role of their work and how this has influenced your own practical project.

### Year Two: *Controlled Assignment* (15 hours)

The Controlled Assignment is done over a period of at least six weeks and ends with a fully resolved final piece which you are given 15 hours to complete. This unit allows you to build upon the work done in your Personal Investigation.



At the start of the course you will be required to purchase a Department kit of materials, though the Department will provide you with most of what you need to produce your own work. Support materials are provided. Students are also expected to have or have access to a digital camera, iPod, iPhone or similar, capable of being used with downloadable Apps.

## Do I need any particular subjects, skills or interests?

Though no previous photography qualification is required, if taken, a grade 4 or C in GCSE Art is required but a keen interest in the subject is essential. If you haven't taken GCSE Art you will need a grade 5 or B in GCSE English.

You will have four lessons each week and, in addition, you are required to do a further four hours homework/independent study. You can get a good idea of the range and scope of the Photography course by visiting one of the College open events. You may also call in at other times and ask to see students' work.

## Will I take part in any study visits/fieldwork?

The Department offers visits to both local and national galleries for all students. There are also study visits for second year students, which takes place in June or July. You are required to see first hand the artworks chosen for your written related study in Year Two.

## What can I do after the course?

Many of our students progress to art foundation courses at various art colleges and universities and then on to a very wide range of specialist art courses in higher education. A few students each year progress straight on to Photography degree courses.

# Biology

Examination Board: Eduqas



Biology today is the fastest developing Science with GM Technology and Climate Change constantly in the headlines. This course offers a comprehensive insight into the many different aspects of Biology including Biochemistry, Cellular Biology, Anatomy and Physiology, Genetics and Ecology. There are millions of different species on the planet and the course follows a comparative approach into the ways in which species have evolved particular adaptations to overcome the "trials of life".

## What does the course involve?

### Year One

- ▶ Biodiversity and classification
- ▶ Cell structure and organisation
- ▶ Cell membranes and transport
- ▶ Adaptations for gas exchange
- ▶ Adaptations for transport
- ▶ Basic biochemistry: carbohydrates, lipids and proteins
- ▶ Biological reactions are regulated by enzymes

- ▶ Adaptations for nutrition
- ▶ Nucleic acids and their functions
- ▶ Cell division

### Year Two

- ▶ Sexual reproduction in humans and plants
- ▶ Variation and evolution
- ▶ Application of reproduction and genetics
- ▶ Photosynthesis and respiration
- ▶ Microbiology
- ▶ Populations and ecosystems
- ▶ Human impact on the environment
- ▶ Homeostasis and the kidney
- ▶ The nervous system
- ▶ Option module (choose one):
  - Immunology and disease
  - Human musculoskeletal anatomy
  - Neurobiology and behaviour

External assessment is by written examination in the summer term at the

end of the second year. The examinations will assess your theoretical knowledge (75%), your practical skills (15%) and your mathematical skills (10%).

## Do I need any particular subjects, skills or interests?

As a minimum, you will normally require a grade 5 or B in GCSE Combined Science or equivalent, or two separate sciences, including Biology. You should also have at least a grade 5 or B in GCSE Mathematics and grade 5 or B in GCSE English.

## Will I take part in any study visits/fieldwork?

The Department arranges a variety of local trips to link in with various aspects of the course; there is usually a nominal charge for these. You will also be required to attend a short residential field course at a subsidised cost of approximately £230.

## What can I do after the course?

During the course you will learn many new skills that will help you not only gain good grades in Biology A Level but also provide you with the skills for higher education and for jobs in the future. There is a vast range of specialist courses for which Biology provides an excellent foundation, such as medicine, veterinary sciences, nursing and biology. The STEM skills that you develop within A Level Biology can also prove beneficial for many non-biological degrees. You might also consider how useful Biology is for other courses/careers for example, archaeology, pharmacology, speech therapy, psychology and law.

# Business

Examination Board: AQA

## What does the course involve?

This course helps you to develop a number of skills: how to assemble data and assess it; how to investigate facts and use deduction; how to put over your point of view fluently and how to work as a team to achieve results.

There is no coursework for this subject.

### Year One

- ▶ *What is business?*
- ▶ *Managers, leaders and decision making*
- ▶ *Decision making to improve marketing performance*
- ▶ *Decision making to improve operational performance*
- ▶ *Decision making to improve financial performance*
- ▶ *Decision making to improve human resource performance*

### Year Two

- ▶ *Analysing the strategic position of a business*
- ▶ *Choosing strategic direction*
- ▶ *Strategic methods*
- ▶ *Managing strategic change*

In Business you will:

- ▶ gain an understanding of the nature and working of business and industry
- ▶ develop communication, numeracy and IT skills
- ▶ learn how to set objectives and how to make business decisions with limited information and resources

The Department provides many of the resources but you will be encouraged to purchase some business publications for yourself at a cost of approximately £20 each year.



## Do I need any particular subjects, skills or interests?

There are no specific entry requirements and the course assumes that you have not studied the subject before. Business can be combined successfully with a wide variety of other subjects.

The A Level assesses quantitative skills, making up a minimum of 10% of the overall marks. The skills tested include ratios, averages, fractions, percentages and calculation of profit or loss.

## Will I take part in any study visits/fieldwork?

There are a variety of optional trips and seminars which you might like to attend. Costs for these range from £25-£180

## What can I do after the course?

Many successful students go on to business related higher education courses. These include accountancy, management science, leisure

management and marketing. Business courses incorporating a foreign language have become popular in recent times. Other students have made use of their knowledge in a wide variety of employment situations and the course provides a strong foundation for those planning to work in a family business such as farming.

Scan the QR code to find out what Lewis has to say about A Level Business:





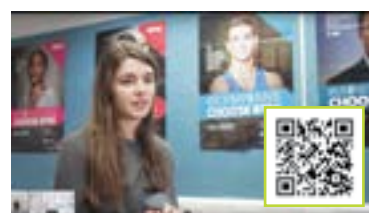
# Business

Examination Board: Pearson



provides a strong foundation for those planning to work in a family business such as farming.

**Scan the QR code to find out what Abi has to say about the BTEC Extended Certificate in Business:**



## What does the course involve?

The Certificate is designed to be the substantive part of a 16-19 study programme for students who want a strong core of business sector study.

This programme may include other BTEC Nationals or A Levels to support progression to higher education courses in business areas before entering employment.

The additional qualification(s) studied give breadth to your study programme by choosing a contrasting subject, or give it more focus by choosing a complementary subject.

The course is assessed by a combination of external and internal assessments.

### Year One

- ▶ *Exploring Business*
- ▶ *Developing a Marketing Campaign*

### Year Two

- ▶ *Personal and Business Finance*
- ▶ *Market Research*

## Do I need any particular subjects, skills or interests?

There are no specific entry requirements and the course assumes that you have not studied the subject before. BTEC Business can be combined with a wide variety of other subjects.

The course assesses quantitative skills, including ratios, averages, fractions, percentages and calculation of profit or loss.

## Will I take part in any study visits/fieldwork?

There are a variety of optional trips and seminars which you might like to attend. Costs will vary from free to £200.

## What can I do after the course?

Many successful students go on to business related higher education courses. These include accountancy, management science, leisure management and marketing. Business courses incorporating a foreign language have become popular in recent times. Other students have made use of their knowledge in a wide variety of employment situations and the course

### What does the course involve?

### Year One

- ▶ *Exploring Business*
- ▶ *Developing a Marketing Campaign*
- ▶ *Managing an Event*
- ▶ *International Business*

## Year Two

- ▶ *Personal and Business Finance*
- ▶ *Principles of Management*
- ▶ *Accounting*
- ▶ *Market Research*

### Do I need any particular subjects, skills or interests?

The course assesses quantitative skills, including ratios, averages, fractions, percentages and calculation of profit or loss.



**Will I take part in any study visits/fieldwork?**

There are a variety of optional trips and seminars which you might like to attend. Costs will vary from free to £200.

## What can I do after the course?

Many successful students go on to business related higher education courses. These include accountancy, management science, leisure management and marketing. Business courses incorporating a foreign language have become popular in recent times. Other students have made use of their knowledge in a wide variety of employment situations and the course provides a strong foundation for those planning to work in a family business such as farming.

# Chemistry

Examination Board: OCR



## What does the course involve?

Chemistry aims to explain the properties of substances in terms of the particles they are made from: atoms, molecules and ions. In this course you will learn a lot of fundamental theory concerning the behaviour of these particles and you will see how this is reflected in the properties of substances and the reactions they undergo. You will also see the creative side of chemistry, learning how molecules can be built up and transformed in organic synthesis and you will consider the importance of chemistry in the real world.

The A Level we study is OCR Chemistry A. The structure is built around six modules:

### *Development of Practical Skills*

Laboratory work is an important part of the course and in your final examinations you will have to show your understanding of the practical methods you encounter.

### *Foundations in Chemistry*

These are the basic ideas that underpin everything else in Chemistry, including the structure of atoms and the nature of the bonds that can form between them and how these things are related to the

properties and reactivities of substances. You will also learn how to perform key chemical calculations that will be used throughout the course.

### *Periodic Table and Energy*

Here you will learn about trends and patterns of behaviour among the elements in the periodic table. You will also see how the energy changes accompanying reactions can be measured and understood.

### *Core Organic Chemistry*

This introduces the diverse chemistry of carbon compounds. You will learn to understand their structures and reactions and how these things can be investigated.

### *Physical Chemistry and Transition Elements*

This module builds on ideas from module 2, giving further insight into rates of reactions and chemical equilibria and introducing another part of the periodic table.

### *Organic Chemistry and Analysis*

This module is the sequel to module 4, introducing a much wider range of organic reactions and more powerful

methods of structure determination.

The A Level is examined by means of three written papers at the end of two years, which cover all of these modules.

There is no practical examination in Chemistry but you will record your experiments as you go through the course and, if you have completed the practicals, picked up some key skills and kept your records, you can be awarded a **Practical Endorsement for Chemistry**, which is an additional qualification.

## Do I need any particular subjects, skills or interests?

You will require at least a grade 5 or B in GCSE Combined Science or equivalent, or two separate sciences including Chemistry and at least a grade 5 or B in GCSE Mathematics. We would normally expect that at least one of these grades - in Chemistry, Combined Science or Mathematics - will be Grade 6 or higher. You should have a strong interest in understanding how the world works at the molecular level. You will need to be able to visualise atoms and molecules interacting and reacting together. There is a considerable amount of mathematics in A Level Chemistry. The skills you need will have been covered in GCSE Mathematics but you will need to be ready to apply these intelligently and accurately to chemical problems.

## What can I do after the course?

Chemistry is essential or at least desirable for a wide range of higher education science courses. In addition to chemistry and chemical engineering, this would include medicine and veterinary medicine, as well as many related courses such as biochemistry, pharmacy and biomedical science as well as materials science and nanotechnology. Chemistry is also highly regarded as a basis for any non-scientific course or career.



# Classical Civilisation

Examination Board: OCR

Classical Civilisation is the study of ancient Greek and Roman civilisation. It is the ultimate humanities subject, encompassing a huge variety of disciplines including literature, history, archaeology and art.

You will learn about the foundations of Western culture and society and study the oldest surviving works of Western literature.

## What does the course involve?

The course consists of three components:

### *The World of the Hero*

An in-depth study of Homer's *Iliad* (Year One) and Virgil's *Aeneid* (Year Two). Texts are studied in English translation.

### *Culture and the Arts*

Imperial Image - focusing on the emperor, Augustus' public image and self presentation, including his representation in art and literature.

### *Beliefs and Ideas*

Greek Religion - studying the practicalities of religious ritual, the role of religion in society, the layout and function of famous temple complexes and the nature of the gods and their relationship with mortals.

## Do I need any particular subjects, skills or interests?

You should have an interest in the ancient world and its cultures. You do not need to know any languages - all texts are in translation.

The course involves a considerable reading element. It would appeal to students of History, Philosophy & Ethics, Politics and English Literature in particular.

## Will I take part in any study visits/fieldwork?

There are no compulsory trips but optional study days, as well as visits to the Ashmolean Museum in Oxford and/or the British Museum in London may be offered.



## What can I do after the course?

During the course you will develop analytical and communication skills which will be relevant to a wide array of careers. In particular, it supports entry into careers in history, archaeology and heritage, literature and publishing.

It can lead to further study in related subjects including classics, drama, English, history, history of art, philosophy and politics.

Scan the QR code to find out what Kitty has to say about A Level Classical Civilisation:





# Computer Games Development & Cyber Security

Examination Board: Pearson



## What does the course involve?

This course provides you with an opportunity to study in the field of Computer Science through the context of *Games Development & Cyber Security*. Cyber Security is often in the news and there is a recognised need for specialists to be trained to enter this industry. Games Development is an exciting area of Computer Science. This course will utilise industry standard tools to enable students to gain firm foundations for further study or employment.

This qualification is a two year vocational course and is equivalent to one A Level i.e. the Distinction\* with this qualification is worth the same UCAS tariff points as the A\* grade at A Level. It can be studied alongside other Level 3 courses including *Information Technology (IT)*.

- ▶ There are four units studied over two years which include *Games Development*, *IT Systems Security and Encryption*, *Computer Science Principles* and *Computer Systems Fundamentals*.

- ▶ 42% of the work is assessed through internal assessment involving both written and practical tasks.
- ▶ 58% is assessed through external assessment involving two written examinations.
- ▶ Final grades of Pass, Merit, Distinction or Distinction\* are awarded.
- ▶ Industry standard software and languages are used on the course (e.g. *C#*, *Visual Studio Professional* and *Unity*).
- ▶ A variety of skills will be developed during the course which will include:
  - computational thinking skills to solve problems;
  - game development and programming in *C#* and *Unity*;
  - protecting against IT system security threats;
  - testing and reviewing protection;
  - application of cryptographic techniques;

- presentation and interview skills;
- industry/professional writing skills.

## Do I need any particular subjects, skills or interests?

In addition to the mandatory A Level programme requirements you should have at least a grade 3 or D in GCSE Mathematics. Skills in the following are particularly important given the significant demands of coursework:

- ▶ self motivation and being able to work independently;
- ▶ organisation and good timekeeping;
- ▶ problem solving;
- ▶ ability to prioritise;
- ▶ confidence in written communication.

## Will I take part in any study visits/fieldwork?

The Department offers an Outward Bound style activity day (costing approximately £40) to enable you to build relationships with your peers and develop important skills such as teamwork. An optional trip takes place to EGX, the UK's biggest games event, which includes opportunities to play new games, hear from leading developers and get careers advice from the games industry. There are also visits arranged to university Computer Science departments. Past trips have also included the National Museum of Computing at Bletchley Park and the Science Museum in London.

## What can I do after the course?

The course offers progression onto a wide range of degree courses, apprenticeships and careers. Careers include games developer, cyber security, network technician, programmer, web developer, systems analyst, digital media, information systems, network support, business, accountancy, teaching, advertising, TV and film production.

# Computer Science

Examination Board: OCR

## What does the course involve?

Computer Science has computational thinking at its core; thinking that provides solutions to problems, designs systems and recognises the nature of human and machine intelligence. It is a creative subject which involves the innovative thinking and development of ideas through coding. It can be studied alongside other Level 3 courses, including IT.

The A Level qualification consists of two examined units and one coursework unit:

- ▶ *Computer Systems (40%)*
- ▶ *Algorithms and Programming (40%)*
- ▶ *Programming Project (20%)*

## Year One

You will study contemporary systems architecture, databases and networks which include practical lessons using the Raspberry Pi. You will develop computational thinking skills, write code and learn about web technologies. You will explore programming techniques and understand key standard algorithms such as insertion sort and binary search. Your coding skills are developed through writing algorithms that solve interesting problems.

## Year Two

The second year includes the characteristics of contemporary processors, software development methodologies and how data is represented, stored and exchanged between different systems. You will learn how to code using advanced programming techniques. Merge sort, quick sort, A\* and Dijkstra's algorithm will be explored. The coursework project involves using your skills to develop a solution to a problem of your own choice. Most students opt to produce a game or simulation.

## Do I need any particular subjects, skills or interests?

To study Computer Science a minimum of grade 5 or B in Mathematics is required as a means of demonstrating an effective



approach to problem solving. You do not need to have studied Computer Science at GCSE. You should enjoy problem solving and have a strong interest in learning how to code.

## Will I take part in any study visits/fieldwork?

An optional trip takes place to EGX, the UK's biggest games event, which includes opportunities to play new games, hear from leading developers and get careers advice from the games industry. There are visits arranged to university Computer Science departments during the course. Past trips have also included the National Museum of Computing at Bletchley Park and the Science Museum in London.

## What can I do after the course?

Russell Group universities list Computer Science as a useful A Level for many degree courses including Biochemistry, Biology, Chemistry, Economics, Engineering, Geology, Mathematics, Materials Science, Medicine, Optometry, Physics, Pharmacy, Psychology and Sociology. Students have gone on

to study the subject at a range of institutions including prestigious universities: Birmingham, Bristol, Oxford, Reading and York. Computer Scientists are in demand and find work in many industry sectors.

**Scan the QR code to find out what Heron has to say about A Level Computer Science:**



**Diploma** [equivalent to one A Level]

# Criminology

Examination Board: WJEC/Eduqas



## What does the course involve?

The course has been designed to offer you an exciting insight into the field of criminology. Our Criminology programme focuses on the study of crime, deviance and the criminal justice system. Developing your understanding of the key concepts, theories and principles of criminology and their application across a range of case studies and examples.

You will study the cause and effect of criminal actions, the form and outcome of social disorders, policing and regulation of public order, procedures and techniques of the criminal justice system. We also look at the relationship between behaviours and punishments.

Although the course can be taken over one year to achieve the Certificate level, it is really designed as a two year programme with synoptic assessment, in order to achieve the Diploma level. Each year follows the structure of 50% internal controlled assessment and 50% external assessment via an examination. The course itself will cover the following areas of study:

## Year One

- ▶ *Changing Awareness of Crime*
- ▶ *Criminological Theories*
- ▶ An internal controlled assessment (25% of the two year Diploma or 50% of the one year Certificate)
- ▶ External assessment - 90 minute examination on Unit 2 (25% of the Diploma or 50% of the Certificate)

## Year Two

- ▶ *Crime Scene to Courtroom*
- ▶ *Crime and Punishment*
- ▶ Controlled assessment (25% of the Diploma)
- ▶ External assessment - 90 minute examination on Unit 4 (25% of the Diploma)

## Do I need any particular subjects, skills or interests?

There are no formal entry requirements other than the College minimum entry requirements for A Level programmes. You will not need any previous knowledge of Criminology but you

should have an interest in complimentary areas such as Psychology, Sociology, Politics, History and Law. You will need to be able to write clearly and logically, with a minimum grade 4 or C in English, due to the high content of coursework and reading. You should also have basic mathematical skills in order to analyse statistics and data.

## Will I take part in any study visits/fieldwork?

Whilst there are no compulsory visits, you will have the opportunity over the two years, to attend conferences and lectures, such as the hugely successful *CrimCon* in Birmingham, as well as the chance to participate in further trips such as the forensic criminology trip (where you will enter a crime scene house and get to analyse blood spatter patterns), a visit to the courts, a tour of a working prison and an international trip to Auschwitz-Birkenau in Poland. You will also have compulsory talks, as part of your course, from a number of guest speakers from related professions, such as the police, criminologists, probation workers and even ex criminals.

## What can I do after the course?

The course aims to provide you with the underpinning knowledge, understanding and skills to progress to further study and training. It is relevant to many jobs within the criminal justice sector, including the police, probation service and prison and rehabilitation service, social workers and other professions in the legal field. With critical thinking, analytical and communication skills, criminology graduates are also attractive to employers outside the criminal justice sector in areas such as social research and politics.

**Scan the QR code to find out what Abi has to say about the Diploma in Criminology:**





# Dance

Examination Board: Pearson

## What does the course involve?

This is a two year Dance course which is equivalent to one A Level, with the same amount of UCAS points for university or further education.

It is a serious vocational training course recognised by UCAS for those thinking about going on to study Dance, Musical Theatre, Drama or Performing Arts at university.

Students can study this course alongside their other Level 3 courses.

- ▶ This course will have practical elements with many performance opportunities.
- ▶ Parts of the course have elements of written work. This will be through log books and evaluations.
- ▶ The course is designed to enhance any Dance style, such as:
  - Ballet
  - Contemporary
  - Modern
  - Jazz
- ▶ As this is a BTEC qualification, the work is assessed throughout the year.
- ▶ Final grades of either Pass, Merit, Distinction and Distinction\* are awarded.
- ▶ You will be set assignments throughout the duration of the course. Here are some examples of the course units studied:
  - Dance Performance
  - Performing to an Audience
  - Developing Movement Skills

## Do I need any particular subjects, skills or interests?

The course requires you to have relevant experience in at least one Dance genre and to have a true desire to learn, improve your dance skills and perform them to a live audience. This course requires 100% commitment and at least a grade 4 or C in GCSE English.



## Will I take part in any study visits/fieldwork?

During the course there will be workshops with visiting Dance specialists and the opportunity to see professional performances. Costs will vary depending on where the performance is. We have regular trips to the Birmingham Hippodrome and a trip to London will be offered.

## What can I do after the course?

This is a practical course, focusing on the development and refinement of dancing skills and how they contribute to the telling of a story to an audience. It will complement your A Level qualifications and help you progress in this field in higher education.

Past students have gained entry into the following colleges:

- ▶ Bath Spa University
- ▶ Bird College of Dance, Sidcup
- ▶ Chichester University

- ▶ Falmouth University
- ▶ Liverpool Institute of Performing Arts (LIPA)
- ▶ Millennium Performing Arts College, London
- ▶ Northern School of Contemporary Dance, Leeds
- ▶ Performance Preparation Academy (PPA), Guildford
- ▶ The Urdang Academy, London

as well as many other university courses.

**Please note, this course specification may change, therefore, please check the College website for the most up to date information.**  
[www.hereford.ac.uk](http://www.hereford.ac.uk)



# Drama & Theatre Studies

Examination Board: Pearson



## Will I take part in any study visits/fieldwork?

Theatre Studies students must attend all theatre visits and workshops as part of this course. These will take place during evenings and some matinee performances. Costs may vary from a theatre trip to London at approximately £60 to a local production costing £10.

## What can I do after the course?

Theatre Studies is recognised as a clear indication of high academic and practical achievement and leads the way to a great variety of higher education courses at Russell Group universities, drama schools and other universities.

Former students have gone on to careers including acting, theatrical design, music, law, politics, psychology, advertising, stage management, the media, journalism and teaching.

## What does the course involve?

This course offers you the opportunity to examine all aspects of drama, performance and theatre. It develops acting skills, design skills, imagination, confidence and knowledge of a wide range of different theatrical styles. You will learn how to research and plan performances, including devised and scripted work.

You will study plays from a practical perspective and create and show your own work consistently throughout the course.

You will act, direct and rehearse with a serious focus on how to produce the best quality work at all times.

You will be assessed through a programme of practical performances and through written work, analysing and evaluating your practical understanding of theatre, live performances seen and your own performance.

Performances will take place in a 160 seat theatre with industry-standard lighting and sound. You will develop a detailed understanding of what makes a good

performance, how to create one and how to analyse and evaluate the skills used in successful theatre.

Theatre trips/workshops are an essential part of this course and are compulsory for all students. You will need to be committed, inventive and open to new forms and styles of theatre.

The components are assessed through practical and written work.

This course will require you to act in or design a series of practical assessed units covering scripted and devised work. You will study plays from a range of time periods and styles, theatrical practitioners and theatre companies. You will also see a wide variety of productions at the theatre.

## Do I need any particular subjects, skills or interests?

You will need to have previous experience of performing. You will need at least a grade 5 or B in GCSE English Literature with performance experience or a combination of grade 4/5 or C and grade 5 or B in GCSE Drama and GCSE English Literature.

# Economics

Examination Board: Pearson

## What does the course involve?

The emphasis of the course is on the UK economy, including such topics as economic growth, inflation, unemployment and the labour market. You will also study the international perspective, including the European Union, globalisation, poverty, international trade and the environment.

You will learn how to apply economic theory to the analysis of “real world” economic issues. For example, how are prices determined? Why have energy prices been rising? What effect does an economic downturn or recovery in Europe have on the UK economy? What economic policies can be followed to help create jobs or reduce inflation? How can we control the negative aspects of economic growth such as rising inequality or increased pollution?

There are strong links with other subjects such as History, Geography, Government & Politics and Mathematics.

The Economics A Level is a two year programme assessed by three written examination papers at the end of the course.

There is no coursework in Economics.

Examinations include short questions that test students’ examination skills as well as data response and essay questions that require you to discuss and evaluate economic issues in greater depth.

## Do I need any particular subjects, skills or interests?

The course starts from scratch and does not assume any previous knowledge of Economics. However, you must meet the College’s general entry requirements and have at least a grade 6 or B in **both** GCSE Mathematics and GCSE English.

Some economic concepts are quite challenging and you need to have good analytical skills. You will need to develop what is called an “economist’s mindset” and it is important that you have an interest in “real world” economic issues that feature constantly in the news.



## Will I take part in any study visits/fieldwork?

We offer non-compulsory trips to Economics student conferences and revision events. A one-day trip may cost from approximately £45 to £100, depending on the location. We also provide other enrichment activities. For instance, we often host relevant outside speakers.

## What can I do after the course?

Economics is a highly regarded academic subject that supports you in your application for a wide range of university and other higher education courses. Successful students often go on to study economics, finance, or other courses related to business management.

It is worth pointing out that Economics graduates are among the most highly paid. Economics is useful in a wide variety of employment situations, such as finance, banking and the retail sector. The course also provides a strong foundation for those planning to work in a family business such as farming.

# Engineering

Examination Board: OCR



## Do I need any particular subjects, skills or interests?

You need to have a grade 5 or C in Mathematics and an interest in Science

## What can I do after the course?

This course can lead into higher education, such as a degree or a foundation degree in Engineering, an apprenticeship or employment.

## What does the course involve?

Engineering is a vocational course that helps prepare you for either a degree in Engineering or moving straight into the workplace. It is important to note that this is not a hands-on Engineering course, there will be some experiments, however, this is an academic course that involves studying the Mathematics and Science that underpins Engineering.

It focuses on two areas of engineering: mechanical and electrical.

Machines are made up of components and mechanisms working in combination. Engineers need to understand the principles that govern the behaviour of these components and how they are applied. Electrical systems and electronic devices are present in almost every aspect of modern life and it is engineers who design, test and produce these systems.

This course helps you develop your Mathematical and Scientific knowledge and skills so that you can begin to understand these processes.

You will study modules on:

- ▶ Mathematics
- ▶ Science
- ▶ Mechanical Engineering
- ▶ Electrical and Electronic Engineering

The Science module includes studying motion, picking appropriate materials, electricity, fluids and thermodynamics.

The Mechanical Engineering module goes further into dynamics with topics on different sorts of gears and mechanisms, studying the bending and breaking of beams and bridge design.

The assessment methodology for this course is very different to the two year linear A Levels. In the first year you will sit one modular examination in January and then two in the summer. There will be an opportunity to resit these papers in the second year.

In the second year you will sit one examination in January and complete two modules of internally assessed material. These modules will give you the opportunity to develop your ability to research and work independently, important employability skills.

# English Language

Examination Board: Pearson

## What does the course involve?

The course explores both spoken and written language in use in a wide range of professionally written texts and transcripts. You will learn a large amount of technical linguistic terminology in order to analyse systematically how language works. To prepare you for an unseen texts examination, you will explore a variety of texts such as advertisements, speeches, magazine and newspaper articles, short stories and extracts from novels and plays. You will investigate many important language issues in society, addressing questions such as: How do people use language to assert power? Do men and women really speak differently? Are they represented differently in the media? How is technology bringing new words into the language and changing the way in which we communicate? How do children learn to speak? How and why has language changed from 1600 to present day?

The Pearson A Level course covers the following examination topics:

### Component 1 - Language Variation (35%)

How language choices can create personal identities and how language has changed over time.

### Component 2 - Child Language (20%)

How children acquire language and learn to read and write.

### Component 3 - Investigating Language (25%)

A research focus from one area such as:

- ▶ Global English
- ▶ Language and Gender Identity
- ▶ Language and Journalism
- ▶ Language and Power
- ▶ Regional Language Variation

### Coursework - Crafting Language (20%)

Two pieces of original writing from the same genre, differentiated by function and/or audience. One commentary reflecting upon the pieces produced.

There are no set texts for this course but we do ask students to purchase a copy of *The Oxford A-Z of Grammar and*



*Punctuation* by John Seely (approximate cost £5.99).

## Do I need any particular subjects, skills or interests?

You must have a grade 4 or C in English Language.

A Level English Language complements most A Levels such as English Literature, Foreign Languages, Law, Media Production, Media Studies, Psychology, and Sociology.

## Will I take part in any study visits/fieldwork?

Visits to lectures and external events relevant to examination topics are offered. Professionals from the field of journalism and academics also visit throughout the year.

## What can I do after the course?

Language skills are relevant to all academic and vocational subjects. You can go on to take a specialist degree in English Language, language and communications or linguistics, or other courses such as law, drama, education, history or any of the social sciences.

Career possibilities for English specialists range from teaching, journalism and publishing to speech and language therapy.



# English Literature

Examination Board: Pearson



Are you passionate about reading?  
Do you love to look closely at texts, analysing exactly what ideas are being explored and how the language works?  
Do you enjoy debating ideas and then organising your thoughts into a strong, clear argument? If so, then A Level English Literature is the course for you.

## What does the course involve?

On this course you will study a wide variety of modern and historical texts - novels, poetry and drama, including the work of William Shakespeare. As well as extending your knowledge and enjoyment of literature, you will develop skills of thinking critically, reading and analysing texts closely and preparing arguments.

We follow the Pearson English Literature syllabus. Assessment for the course is as follows:

### *Drama*

You will study one Shakespeare play and one other play.  
Examination - 2 hours 15 minutes (30%) - two essays, one on each play.

### *Prose*

You will study two novels linked by a common theme (one written pre-1900).  
Examination - 1 hour (20%) - one essay on the two novels.

### *Poetry*

You will study a collection of modern poetry and another poetry collection.  
Examination - 2 hours 15 minutes (30%) - two essays, one on each poetry collection.

### *Independent Coursework (20%)*

You will produce a folder (2,500 - 3,000 words) on your choice of two texts linked by theme, movement, author or period.

Students are expected to buy their own copies of the books studied. There are eight set texts at an approximate cost of £8.00 each.

## Do I need any particular subjects, skills or interests?

This course is more suited to those with a grade 5 or B and above in English.

The ability to work independently, read widely and write extended essays is

essential. You must enjoy reading a range of literary genres and be willing to explore unfamiliar texts and authors. You should have a critical, questioning approach to what you read. It is an advantage to be well read and have a clear and accurate written style.

## Will I take part in any study visits/fieldwork?

The Department organises visits to study days, theatres and workshops to support work on the texts studied and to prepare for examinations. These are not compulsory and will typically cost around £35.

## What can I do after the course?

This A Level is accepted by Higher Education institutions for the continuing study of English Literature. It is also very useful if you are thinking of a degree in education, law, media studies, history, drama, creative writing, any of the social sciences, as well as the many courses which have English as an element.

Employers value English Literature as it shows you have the skills to synthesise information, explore different points of view and express yourself clearly and cogently.

# Environmental Science

Examination Board: AQA

Environmental Science is a fascinating subject, which will help you to understand how the world works. Environmental Science applies scientific principles to the natural environment to help us to understand and manage it. It is broader than the traditional science subjects and the key to doing well is to be able to make links between cause and effect. For example, an understanding of ecology is needed for managing the habitats of endangered animals and a knowledge of energy transformations informs how we develop and use renewable sources of power. Environmental issues are often in the news and play an increasingly important role in almost every aspect of life, from human population to recycling.

## What does the course involve?

There is no coursework but practical work is an integral part of the course.

### Year One

The course develops a foundation of scientific knowledge and skills associated with the environment and how it works. You will study the four main life support systems which are essential for life on Earth: the Biosphere, Atmosphere, Hydrosphere and Lithosphere.

- ▶ *The Living Environment*
- ▶ *The Physical Environment*
- ▶ *Research Methods*

### Year Two

You will apply your knowledge to understand how different environmental principles are linked. You will study the use of our natural resources to supply the energy, materials and food we need:

- ▶ *Energy Resources*
- ▶ *Pollution*
- ▶ *Biological Resources*
- ▶ *Sustainability*
- ▶ *Research Methods, including Experiment Design*

For fuller details of the specification and the examinations, two 3 hour papers at the end of the course, see the AQA



website: [www.aqa.org.uk/subjects/science/as-and-a-level/environmental-science-7446](http://www.aqa.org.uk/subjects/science/as-and-a-level/environmental-science-7446)

## Do I need any particular subjects, skills or interests?

Environmental Science goes well with other earth sciences, such as Biology and Geology as well as Chemistry and Physics. Some students, who are doing mainly arts subjects, choose to study Environmental Science because they want to keep their education broad by continuing with a science subject.

To start Environmental Science you will need a minimum of grade 5 or B in GCSE English, Mathematics, Combined Science (or equivalent), or two separate sciences. Equivalent qualifications may be accepted, please ask at enrolment. You will also need an interest in the natural environment and a desire to understand how it works.

## Will I take part in any study visits/fieldwork?

Four days' field work is part of the course.

Most of the field work will be carried out locally, but a residential trip may be arranged. In Year One there are trips to the Elan Valley and a Zoo, with a total cost of approximately £32. Local visits to study rivers, a nature reserve and a large farm, will either be free or cost less than £3 each.

## What can I do after the course?

If you are successful, you will have an A Level in a science subject, to help you gain a place on a degree or technical course or an apprenticeship. There are many courses with environmental content, from land management to environmental health, climate science to conservation biology. Environmental Science is also relevant to primary school teaching, veterinary medicine, agriculture and architecture, amongst other careers.

# French

Examination Board: AQA



## What does the course involve?

The course aims to develop high levels of competence in understanding, speaking and writing French and a deeper knowledge of French culture, civilisation and other French speaking countries.

### Subject Content

Over the two years you will study:

- ▶ *Social Issues and Trends*
- ▶ *Political and Artistic Culture*
- ▶ *Literary Texts and Film*
- ▶ *Grammar*

The work is presented in context through newspaper and magazine articles, radio and television programmes, film, video and the Internet.

French makes you think. It encourages you to question your own ideas, put your point of view across and offers you the chance to understand French society and culture more deeply. French is a challenging but highly rewarding subject.

Learning languages helps develop communication and problem solving skills and gain independence, flexibility

and organisational skills - all qualities that employers value. There are many areas of work in which languages can be a real asset.

French will also help to develop your confidence, your social skills and your European awareness.

You will be expected to go over material covered in class every day to build your knowledge of the language and vocabulary. You will write short essays on the topics you study.

It is essential to maintain full and detailed vocabulary and grammar notes. There are weekly tests, comprehension and grammar exercises, translations and the preparation of texts for classroom study or oral presentation.

### Assessment

Paper 1: Listening, Reading and Writing (50% of A Level)

Paper 2: One Text and One Film Essay (20% of A Level)

Paper 3: Oral (30% of A Level)

## Do I need any particular subjects, skills or interests?

At A Level it is important to read widely and have an interest in how language works. You will develop and express opinions on wide ranging topics including current social issues, political life and artistic culture in the French-speaking world.

You need a grade 6 or B, or above, in GCSE French and a grade 6 or B, or above, in both English Language and English Literature and a genuine level of interest and commitment to French language and culture.

## Will I take part in any study visits/fieldwork?

You are encouraged to take part in a week long residential study visit to Nice, where you will be taught by native speakers (costing approximately £800 in recent years which includes full board and lodging). Financial help may be available in cases of hardship.

## What can I do after the course?

The knowledge of a European language increases your career prospects. French can help you gain access to top jobs in business, banking, finance, journalism, law, public relations, travel and the civil service. There are opportunities in tourism, the media, the diplomatic service, translation and interpreting.

French is the first or second language in over 43 countries and is spoken by approximately 220 million people across every continent. It is an official language at the United Nations and one of two at the Olympics. French is an important language in the fields of technology and business.

Recent data from Oxford University shows that 93% of Modern Language graduates go straight into employment or further study compared to an 87% average in other subjects.



# Geography

Examination Board: Pearson

## What does the course involve?

The world in which we live is likely to change more in the next 50 years than it has ever done before. Geography explains why and examines how we can prepare for these changes. Geography is a very varied and interesting subject. It is about the environments we inhabit and some of the ways we use (or abuse) them. The course involves a mixture of physical and human geography.

### Year One

#### Dynamic Landscapes

##### *Tectonic Processes and Hazards*

How plate tectonic processes are shaping the Earth's surface. Impact and management of tectonic hazards like earthquakes, volcanoes and tsunamis.

##### *Glaciated Landscapes and Change*

Glacial geomorphology - studying how glaciers have shaped large areas of the Earth's surface. How glacial environments affect human activity.

#### Dynamic Places

##### *Globalisation*

The increasing interconnectedness of the world, socially, politically and economically.

##### *Shaping and Regenerating Places*

Rural and urban regeneration programmes change places and our perception of them with varying degrees of success.

### Year Two

#### Physical Systems and Sustainability

##### *The Water Cycle and Water Insecurity*

Hydrology - studying how the global water cycle operates as a system and impacts on human activity. How water supply can be managed to reduce water insecurity.

##### *The Carbon Cycle and Energy Security*

The operation of the global carbon cycle as a system with stores and fluxes. Impact of humanity's increasing demand for energy on the carbon cycle and climate change.



#### Human Systems and Geopolitics

##### *Superpowers*

Superpowers have significant impacts on the global economy, politics and the environment. The spheres of influence between superpowers changes over time and is frequently contested with geopolitical implications.

##### *Global Development and Connections*

Large scale international migration due to increasing globalisation is changing traditional definitions of national sovereignty, nation states and attitudes to national identity. Global governance has developed to manage these changes whilst nationalist movements are challenging the dominant model of economic growth.

#### Coursework: Independent Investigation (20% of the qualification)

Students undertake some genuinely individual scientific research on any aspect of Geography they choose.

#### Do I need any particular subjects, skills or interests?

You should have a keen interest in the subject. You will need to write essays

and use statistics so should have at least a grade 5 or B in GCSE English and a grade 4 or C in Mathematics. A grade 5 or B in GCSE Geography is also normally required but if you have not taken the subject before you will be considered based on your other results.

#### Will I take part in any study visits/fieldwork?

Fieldwork is an integral part of the course and there will be a number of local excursions. You will also be expected to participate in a residential course. In 2019 this trip was to the French Alps, at a cost of around £495. Financial help may be available in case of hardship.

#### What can I do after the course?

A Level Geography is highly regarded by both employers and in higher education, including the prestigious Russell Group universities. In part, this is because of the skills it helps you develop, but also because you gain a knowledge and understanding of our planet. It is a facilitating subject which can open the door to a wide range of degrees and career options.



# Geology

Examination Board: OCR



## What does the course involve?

Geology is the “scientific study of the solid Earth, its rocks and processes”. It is a very varied science which deals with the four billion years of our planet’s history. It involves the study of the most fascinating and remarkable landscapes on earth.

There are three examinations, taken at the end of the two year course. In addition, you will complete a practical endorsement, which assesses your competence in completing a range of fieldwork and laboratory investigations. This is graded separately to the main A Level.

*Development of Practical Skills in Geology*  
This module includes developing geological field skills (such as rock description, map making) and laboratory experimentation. You will work on this module throughout the whole course.

*Foundations in Geology*  
This section aims to provide you with a basic geological toolkit grounded in hands-on experience of rocks and fossils. You will learn to identify minerals and rocks and learn about igneous, sedimentary and metamorphic processes. You will learn to identify

important fossils and build an understanding of the geological time scale.

### *Global Tectonics*

This section provides knowledge and understanding of the Earth and its place within the solar system. You will study Earth structure, formation and the development of the theory of plate tectonics.

### *Interpreting the Past*

This section provides knowledge and understanding of modern sedimentary environments and sedimentary rocks. You will study how sedimentary rock layers and fossils can be used to build up our understanding of Earth’s history.

### *Petrology and Economic Geology*

This module covers advanced sedimentary, igneous and metamorphic processes, hydrogeology, and the formation and extraction of metallic mineral resources, such as gold.

### *Geohazards*

This module covers a wide range of hazards, including earthquakes, landslides and sinkholes. You will learn about risk analysis and how engineering

geology can be used to reduce the threat of geohazards.

### *Basin Analysis*

Basin analysis is a multidisciplinary approach to the study of sedimentary basins. You will learn about the iconic rocks of the United Kingdom, such as those on the Jurassic coast. There are opportunities to study how oil and gas are formed as well as fossil groups such as the dinosaurs.

By studying Geology you will gain the skills to interpret the evidence of Earth’s history preserved in the rocks and landscapes. Geology is detective work and you will develop many investigative, observational and interpretational skills highly valued by employers and universities. You will learn to view the landscape in a completely new and informed way.

## Do I need any particular subjects, skills or interests?

You will have gained a grade 5 or B in GCSE Science and grade 5 or B in GCSE Mathematics. You need to have a strong interest in our planet. You need to enjoy being outdoors and doing fieldwork.

## Will I take part in any study visits/fieldwork?

Geology is a Field Science and you will learn to work in remote environments. You will visit fascinating, beautiful locations to further your knowledge. In the first year, there is a compulsory visit to Arran in Scotland. Students taking the full A Level are expected to attend and the cost of this is in the region of £500. Financial help may be available in cases of hardship. In the second year there will be a further residential visit in the United Kingdom, several day visits and an optional visit in the second year, for example, to Sicily.

## What can I do after the course?

Earth Scientists are in enormous demand worldwide and command excellent salaries. Geology A Level has provided an important first step towards a well paid, rewarding, globe-trotting career for many of our past students. It could do the same for you!

## A Level

# German

Examination Board: AQA

### What does the course involve?

The course aims to develop high levels of competence in understanding, speaking and writing German and a deeper knowledge of German culture and civilisation (and that of Austria and Switzerland).

### Subject Content

Over the two years you will study:

- ▶ *Social Issues and Trends*
- ▶ *Political and Artistic Culture*
- ▶ *Literary Texts and Film*
- ▶ *Grammar*

The work is presented in context through newspaper and magazine articles, radio and television programmes, film, video and the Internet.

German makes you think. It encourages you to question your own ideas, put your point of view across and offers you the chance to understand German society and culture more deeply. German is a challenging but highly rewarding subject.

Learning languages helps develop communication and problem-solving skills and gain independence, flexibility and organisational skills - all qualities that employers value. There are many areas of work in which languages can be a real asset.

German will also help to develop your confidence, your social skills and your European awareness.

You will be expected to go over material covered in class every day to build your knowledge of the language and vocabulary. You will write short essays on the topics you study. It is essential to maintain full and detailed vocabulary and grammar notes. There are weekly tests, comprehension and grammar exercises, translations and the preparation of texts for classroom study or oral presentation.

### Assessment

Paper 1: Listening, Reading and Writing (50% of A Level)



Paper 2: One Text and One Film Essay (20% of A Level)

Paper 3: Oral (30% of A Level)

### Do I need any particular subjects, skills or interests?

At A Level it is important to read widely and have an interest in how language works. You will develop and express opinions on wide-ranging topics including current social issues, political life and artistic culture in the German-speaking world.

You need a grade 6 or B, or above, in GCSE German, and a grade 6 or B, or above, in both English Language and English Literature and a genuine level of interest and commitment to German language and culture.

### Will I take part in any study visits/fieldwork?

You are encouraged to take part in a week-long residential study visit to Augsburg, where you will be taught by native speakers (costing approximately £800 in recent years, which includes full

board and lodging). Financial help may be available in cases of hardship.

### What can I do after the course?

The knowledge of a European language increases your career prospects. German can help you gain access to top jobs in business, banking, finance, journalism, law, public relations, travel and the civil service. There are opportunities in tourism, the media, the diplomatic service, translation and interpreting. German is spoken by 89 million people in Germany, Austria, Luxembourg, Switzerland and South Tyrol in Italy. German is an important language in the fields of technology and business.

Recent data from Oxford University shows that 93% of Modern Language graduates go straight into employment or further study compared to an 87% average in other subjects.

# Health & Social Care

Examination Board: Pearson



## **Will I take part in any study visits/fieldwork?**

Although not compulsory it is useful to arrange relevant work experience in a health and social care setting as this will help you to gather evidence for your assignments and will support your understanding of the examined material.

## **What can I do after the course?**

The qualification, when taken alongside other Level 3 programmes, will enable you to progress to a degree programme chosen from the health and social care sector. It can be taken alongside, for example:

- ▶ A Levels in Biology and Psychology which could lead to a BSC(Hons) in Nursing.
- ▶ A Levels in English and History which could lead to a BA(Hons) in Primary Education.

## **What does the course involve?**

The qualification typically makes up one third of a full time two year study programme and consists of a combination of continual assessment through written assignments and end of year examinations.

You will complete one assignment and one examination for each year of study and the marks for these will make up your final grade. You will gain an introductory understanding of the health and social care sector through the study of the following units:

### **Year One**

#### *Meeting Individual Care and Support Needs* (assignment)

You will focus on the principles and practicalities that underpin meeting individuals' care and support needs, which are the foundation of all the care disciplines.

#### *Human Lifespan Development* (examined)

You will cover physical, intellectual, emotional and social development across the human lifespan and the factors affecting development and the effects of ageing.

### **Year Two**

#### *Psychological Perspectives* (assignment)

You will explore key theoretical perspectives that have been put forward on psychological and physical development and how they are applied in different health and social care settings.

#### *Working in Health and Social Care* (examined)

You will explore what it is like to work in the health and social care sector, including the roles and responsibilities of workers and organisations.

## **Do I need any particular subjects, skills or interests?**

In order to enrol on this programme you will need the following:

- ▶ Grade 4 or C in GCSE Mathematics and grade 4 or C in GCSE English is preferable;
- ▶ An interest in Health and/or Social Care;
- ▶ An ability to work independently and meet regular deadlines.



# Health & Social Care

Examination Board: Pearson

## What does the course involve?

The qualification typically makes up two thirds of a full time two year study programme and consists of a combination of continual assessment through written assignments, controlled assessment and end of year examinations.

### Year One

#### *Meeting Individual Care and Support Needs* (assignment)

You will focus on the principles and practicalities that underpin meeting individuals' care and support needs, which are the foundation of all the care disciplines.

#### *Human Lifespan Development* (examined)

You will cover physical, intellectual, emotional and social development across the human lifespan and the factors affecting development and the effects of ageing.

#### *Physiological Disorders and Their Care* (assignment)

You will explore types of physiological disorders, the procedures for diagnosis, the development of a treatment plan and a provision of support for service users.

#### *Promoting Public Health* (assignment)

You will explore the aims of public health policy and the current approaches to promoting and protecting health and encouraging behaviour change in the population.

### Year Two

#### *Working in Health and Social Care* (examined)

You will explore what it is like to work in the health and social care sector, including the roles and responsibilities of workers and organisations.

#### *Psychological Perspectives* (assignment)

You will explore key theoretical perspectives that have been put forward on psychological and physical development and how they are applied



in different health and social care settings.

#### *Enquiries into Current Research in Health and Social Care*

(controlled assessment)

You will explore the methodologies of contemporary research and investigate the implications for health and social care practice and services.

#### *Principles of Safe Practice in Health and Social Care*

(assignment)

You will explore the importance of safe working practices, safeguarding procedures and responding to emergency situations in health and social care settings.

## Do I need any particular subjects, skills or interests?

In order to enrol on this programme you will need the following:

- ▶ Grade 4 or C in GCSE Mathematics and grade 4 or C in GCSE English is preferable;
- ▶ An interest in Health and/or Social Care;

- ▶ An ability to work independently and meet regular deadlines.

## Will I take part in any study visits/fieldwork?

Although not compulsory there will be an expectation for you to arrange relevant work experience in a health and social care setting as this will help you to gather evidence for your assignments and will support your understanding of the examined material.

## What can I do after the course?

For many students, Health & Social Care may be the first step in a related career such as nursing, early years teaching or social work.

**Scan the QR code to find out what Megan has to say about Health & Social Care:**





# History – Medieval/Early Modern

Examination Board: OCR



## What does the course involve?

Medieval/Early Modern History focuses on two of the pivotal periods of British and European History.

Units 1 and 3 draw on the rich History of the 15th and 16th Centuries – the point where the leading realms of late Medieval Europe began to resemble modern nation states. This change arguably took place most dramatically in England under the Lancastrian, Yorkist and Tudor monarchies, springing from the dynastic conflicts between these competing forces which constituted the Wars of the Roses.

Unit 2 takes students further back into the Medieval era to examine the motives and impact of the Crusades and the Crusader States, providing students with an invaluable understanding of current Middle-Eastern geopolitics and a fascinating glimpse into the minds of the Medieval peoples of Europe, Asia and the Middle East.

Unit 4 is the non-examined coursework element of the course and it is anticipated that students will complete their coursework on either a Medieval or

Early Modern topic to be decided at the end of the first year of study.

The four units which make up this A Level are:

Unit 1: *Lancastrians, Yorkists and Henry VII, 1445-1509*

This is a source AND essay based examination lasting 1 hour 30 minutes, accounting for 25% of the total A Level.

Unit 2: *The Crusades and Crusader States, 1095-1192*

This is an essay-based examination lasting 1 hour and accounts for 15% of the final grade.

Unit 3: *Tudor Rebellions, 1485-1603*

This is an essay and interpretations-based examination, accounting for 40% of the total A Level.

Unit 4: *Coursework essay*

This is a knowledge and source-based coursework essay accounting for 20% of the total A Level. Topics are likely to be drawn from the content covered in Units 1, 2 and 3 and it is hoped that students will be able to choose between a Medieval and Early Modern topic.

## Do I need any particular subjects, skills or interests?

It is obviously helpful if you have studied History at GCSE but many students take up History for the first time at A Level. You should have a minimum of grade 5 or B in History, if taken, and a grade 5 or B in English to be able cope with the reading level of the texts used. Regular readers will find History more accessible than those who avoid books! More importantly, you need to have an open mind and a willingness to immerse yourself in this period of History.

## Will I take part in any study visits/fieldwork?

You will visit battlefield sites and a local castle as part of your Enquiry topic on the *Wars of the Roses, 1445-1461*. You will also get the opportunity to meet Historians at the Hay Festival as part of the *Hay Levels* initiative exclusive to Hereford Sixth Form College students. Study visits for the second year are currently being reviewed.

## What can I do after the course?

History A Level is a valuable qualification for entry to any literacy based or social science course at degree level or equivalent. History students often continue their studies in history, American studies, journalism, law and politics to name just a few. History graduates can then enter professions related to these courses, but also there is an increasing demand for historians in the media and entertainment industries.

# History – Modern World

Examination Board: OCR

## What does the course involve?

The Modern World History course focuses on some of the pivotal periods of British, European and World History. Unit 1 examines the point where Britain emerged from the Victorian era and became the state we recognise today. Unit 2 looks at the origins of Modern History itself – the American Revolution of the 18th Century. This dramatic shift in the balance of world power was arguably the point where the modern ideologies of Liberalism and Nationalism were created. Unit 3 focuses on the causes and effects of the immense changes which the Russian Empire and USSR experienced over the 19th and 20th Centuries. Unit 4 is the coursework element of the course and is likely to be on a topic drawn from, or related to the other Units or from another topic relevant to the 20th Century.

The four units which make up this A Level are:

### Unit 1: *Britain 1900-1951*

This is a source AND essay based examination lasting 1 hour 30 minutes, accounting for 25% of the total A Level.

### Unit 2: *The American Revolution, 1740-1796*

This is an essay-based examination lasting 1 hour and accounts for 15% of the final grade.

### Unit 3: *Russia and its Rulers, 1855-1964*

This is an essay and interpretations-based examination, accounting for 40% of the total A Level.

### Unit 4: *Coursework essay*

This is a knowledge and source-based coursework essay accounting for 20% of the total A Level. Topics are likely to be drawn from the content covered in Units 1, 2 and 3 or from the 20th Century in general and it is hoped that students will be able to choose between alternative topics.

## Do I need any particular subjects, skills or interests?

It is obviously helpful if you have studied History at GCSE but many students take



up History for the first time at A Level.

You should have a minimum of grade 5 or B in History, if taken, and a grade 5 or B in English to be able to cope with the reading level of the texts used.

Regular readers will find History more accessible than those who avoid books! More importantly, you need to have an open mind and a willingness to immerse yourself in this period of History.

## Will I take part in any study visits/fieldwork?

You are likely to be offered a study visit to Moscow and St Petersburg in October 2020 to complement Unit 3. You will also get the opportunity to meet Historians at the Hay Festival as part of the *Hay Levels* initiative exclusive to Hereford Sixth Form College students.

## What can I do after the course?

History A Level is a valuable qualification for entry to any literacy based or social science course at degree level or equivalent. History students often continue their studies in history, American studies, journalism, law and politics to name just a few. History

graduates can then enter professions related to these courses, but also there is an increasing demand for historians in the media and entertainment industries.

[illegible]

T: 01432 355166 / [www.hereford.ac.uk](http://www.hereford.ac.uk)



## A Level

# Law

Examination Board: OCR

*"The law is reason,  
free from passion."*  
Aristotle

Have you ever wondered...

- ▶ why is a life sentence not really "life"?
- ▶ what is the difference between murder and manslaughter?
- ▶ can the press print whatever they like about a person's private life?
- ▶ how do people become solicitors or barristers and what's the difference?

### What does the course involve?

The study of Law in Year One focuses on how the English legal system works and how law is made. This is followed by the study of Law in Action using examples of everyday problems. You will learn about the criminal law through the study of non-fatal offences and about the Civil Law through the study of the Law of Negligence.

In the second year we build on the knowledge from the first year, examining in depth crimes of murder and theft as well as possible defences e.g. self defence/insanity and further torts such as nuisance. In addition, we debate the effectiveness of the law, for example, whether justice is achieved for victims and should law reflect morals? The final component of the course includes a study of human rights, exploring their constitutional position in the law and how they are enforced.

Students run a mooting group to practise case argument and advocacy skills and local law firms come in to College to help run mock trials using a local District Judge to preside over proceedings.

### Do I need any particular subjects, skills or interests?

A grade 5 or B in GCSE English Language is preferable. You will need to be able to write clear and logical English and to have an interest in current legal issues such as human rights and the arguments



*"It is better to risk saving a guilty man than  
to condemn an innocent one."*

Voltaire

surrounding criminal justice. You will also need to learn, analyse and apply factual information.

### Will I take part in any study visits/fieldwork?

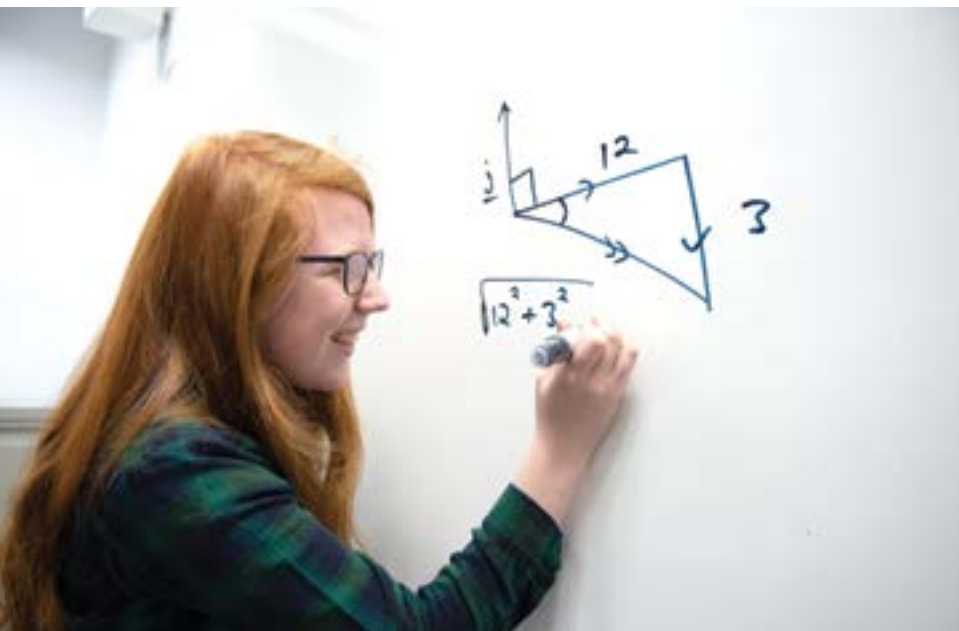
Every year we take a trip to London where we visit the Supreme Court and the Houses of Parliament. We have also taken groups to the Crown Courts in Birmingham and Cardiff. The Department is keen to give students a taste of what it is actually like being involved in a court of law.

### What can I do after the course?

You can, of course, go on to specialise in the Law (and many do), but Law is also a good foundation for higher education in general because of the analytical skills it teaches you, as well as the way it develops your writing skills. Law provides an excellent

preparation for a wide range of careers including the police service, social work (including dealing with youth offenders), journalism, criminal psychology, the armed forces and business.

# Mathematics Courses



## An Overview of Mathematics

Mathematics is not only a beautiful and exciting subject in its own right but also underpins many other branches of learning. It has been fundamental to the development of the society in which we live.

Mathematics can be divided into two areas: at its heart lies Pure Mathematics, which in the main is concerned with algebra and geometry, and Applied Mathematics, which, as the name implies, applies techniques in Pure Mathematics to solve problems in the world about us.

If you wish to study Mathematics at Hereford Sixth Form College, please see the table below:

Your Qualification	Options
9 or A* in GCSE Mathematics  <b>OR</b> you are a very keen Mathematician  <b>OR</b> you have studied Mathematics beyond GCSE	Fast Track Mathematics: Mathematics A Level completed in the first year which then allows the possibility of Further Mathematics A Level in the second year. If you have studied any AS Mathematics at school, you should consider this option.  You will have the chance to discuss this choice at enrolment.
7, 8, 9, A or A* in GCSE Mathematics	Mathematics A Level <b>OR</b> Statistics A Level (page 75)
6 or B in GCSE Mathematics	If you wish to study Mathematics A Level and have a grade 6 or B in GCSE Mathematics you will be advised on an individual basis.  <b>OR</b> A Level Statistics (page 75)
5 or B in GCSE Mathematics	A Level Statistics (page 75) or Mathematics for Life (page 16)
4 or C in GCSE Mathematics	GCSE Mathematics (page 80) or Mathematics for Life (page 16)
Below a 4 or C in GCSE Mathematics	GCSE Mathematics Foundation Level or Level 1/2 as appropriate (see page 80)

# Mathematics Courses

## A Level Fast Track Mathematics/ AS/A Level Further Mathematics

Examination Board: Pearson

### What does the course involve?

This course allows you to complete Mathematics A Level in your first year and then, if you wish, to go on to study an additional A Level in Further Mathematics. You will have six to eight lessons a week instead of the normal four lessons. If you complete the Further Mathematics A Level you will have the opportunity to develop your understanding of Mathematics across a very wide field. This will include: additional Pure Mathematics topics, Decision Mathematics, Differential Equations and more Applied Mathematics.

### Do I need any particular subjects, skills or interests?

Please see the table in Overview of Mathematics on the previous page.

### Will I take part in any study visits/fieldwork?

There are no compulsory visits, but you may have the opportunity to attend conferences and lectures.

### What can I do after the course?

This course is essential for anybody considering a Mathematics degree at university. In addition, Mathematicians are highly valued and well placed when it comes to finding employment in a wide variety of careers. Openings exist in industry, banking and finance as accountants and actuaries as well as in management. Mathematics A Level courses are particularly useful for people hoping to study engineering, the natural sciences or physics at university. In addition, Further Mathematics is academically very demanding and hence prestigious. It is the ideal course if you intend to study Mathematics at university and is particularly useful when applying for competitive entry university courses. Further guidance will be available at enrolment.

### Scan the QR code to find out what Jasmine has to say about A Level Mathematics:



## A Level Mathematics

Examination Board: Pearson

### What does the course involve?

This is a traditional Mathematics course. It builds on your understanding of algebra and geometry and introduces you to new and important concepts such as calculus, which helps us explain how the world changes in time. You will study both Pure and Applied Mathematics. The A Level course culminates in three examination papers, two of which will be on Pure Mathematics and one on Applied Mathematics. The Applied Mathematics paper is made up of 50% Statistics and 50% Mechanics, both of which focus on using Mathematics in real world situations.

### Do I need any particular subjects, skills or interests?

You should normally have at least a grade 7 or A in GCSE Mathematics. If you have a grade 6 or B you will be advised on an individual basis.

### Will I take part in any study visits/fieldwork?

There are no compulsory visits, but you may have the opportunity to attend conferences and lectures.

### What can I do after the course?

Mathematicians are highly valued and well placed when it comes to finding employment. Openings exist in industry, banking and finance as accountants and actuaries as well as in management. Mathematics A Level courses are particularly useful for people hoping to study engineering, economics, the natural sciences or physics at university.



# Media Production

Examination Board: OCR



The creative industry, which includes film and television, is one of the biggest and most successful in the UK and this vocational course is designed to provide relevant knowledge and skills to students who intend pursuing one of the many careers involved. So, if you are thinking of being a documentary filmmaker or setting up a *YouTube* channel, this could be the course for you.

## What does the course involve?

The course is intended to be as practical as possible and the options chosen all relate to skills involved in the production of audio visual media such as short films, music videos and sound broadcasts. This includes elements of pre-production (such as storyboarding and scripting), production (such as filming and recording) and post-production (such as editing).

The course breakdown is as follows:

50% External Assessment (Examination)

50% Internal Assessment

## Year One

### *Media Products and Audiences* (External Assessment)

Develop your understanding of how different media institutions operate in order to create products that will appeal to specific target audiences.

### *Create a Media Product* (Internal Assessment)

Here you will be taking an audio-visual product through pre production, production and post production.

### *Scripting for Media Products* (Internal Assessment)

You will generate an idea for a new film script or TV drama in response to a client brief.

## Year Two

### *Pre-Production and Planning* (External Assessment)

Working from a brief you will learn how to understand the factors that need to be considered during the planning of a new media product.

### *Advertising Media*

(Internal Assessment)

Advertising media is around us on a daily basis, from billboards in the street to adverts daily on the television.

You will plan and create an advert to a client brief.

### *Plan and Deliver a Pitch for a Media Product*

(Internal Assessment)

Media products don't just exist. There is much work to be done before the product is finally consumed by an audience.

Working from a brief, you will create a proposal and pitch for a new audio-visual product.

## Do I need any particular subjects, skills or interests?

Whilst there are no specific requirements in terms of subjects or previous experience (other than a Grade 4 or C in English Language), the vocational nature of the course is designed primarily for students with a keen interest and/or involvement in audio-visual media production and who are considering it as a future course or career option. You should have a keen interest in producing digital media products as well as working well groups.

## Will I take part in any study visits/fieldwork?

Yes. In addition to doing some location shooting and recording, visits will also be arranged to professional media organisations and exhibitions.

## What can I do after the course?

This course will be useful to those students wishing to take a media, film journalism or media production related degree or apprenticeships/employment in the field/industry.

# Media Studies

Examination Board: Eduqas

The media plays a pivotal role in contemporary society, shaping our perceptions of people, issues and politics. Media Studies allows you the opportunity to reflect upon and analyse how these messages are constructed, the conventions and genres of different platforms from print media and TV through to music videos and social media. This course will also allow you the opportunity to develop your production skills through the coursework component.

## What does the course involve?

The course breakdown is 30% coursework and 70% examination.

Examined Units:

**Component 1** requires you to study a broad range of media platforms: six in total, including video games, music videos and radio. It requires you to develop your analytical skills and your understanding of how the media conveys messages about groups of people, the impact of how the industry works, technological issues and developments and how audiences are targeted.

**Component 2** requires a much more in depth study of three further platforms: TV, magazines and online media. In this you'll also consider factors such as narrative and genre.

The A Level course requires you to develop a confident understanding of media theory and use it in your analysis of all media products. You will also get the opportunity to look at diverse products such as mainstream and independent magazines, foreign language television and products aimed at minority audiences to give you a real taste of our diverse media landscape.

Coursework:

**Component 3**, the coursework component, requires you to create a cross platform media production consisting of two products which need to be aimed at a specific target audience. So you might do a television extract and



a supporting magazine article or film posters, DVD covers and a supporting website.

## Do I need any particular subjects, skills or interests?

It's not necessary for you to have taken GCSE Media Studies, but it is beneficial. To be accepted onto A Level Media Studies we require literacy and analytical skills so a grade 5 or C in GCSE English is required. We also expect you to have an interest in the media and media production.

## Will I take part in any study visits/fieldwork?

The Department runs optional field trips such as a residential trip to a media conference at *EuroDisney* and day trips to galleries and museums to view relevant exhibitions. We have also had a range of external speakers ranging from photo journalists to PR professionals.

## What can I do after the course?

This A Level prepares you for a wide range of degree courses in visual culture, TV and media production and communications. The critical and

analytical skills you will develop will be relevant to a wide range of degree courses. It logically leads to careers in PR, marketing, media production, communications and other careers in the UK's thriving creative industries sector.

Scan the QR code to find out what Nathan has to say about the A Level Media Studies:



# Music

Examination Board: OCR



who aspire to a music career and to those who would like to develop a greater understanding of music and musicians. Students routinely progress to study at some of the top universities and conservatoires.

The Department also offers advanced training programmes for able musicians, through the *Academia Musica* scholarship programmes. Please see pages 20-21 or the College website for further details:  
[www.hereford.ac.uk](http://www.hereford.ac.uk)

## What does the course involve?

Music is a highly respected academic course that will challenge and inspire you to gain greater expertise on your instrument, to understand good practice in composition and to improve your evaluation skills by analysing some of history's greatest works.

In addition to your four weekly classes, all music students have access to Music Theory classes leading to Grade 8 and lessons with a specialist performance tutor. You will be given frequent lectures from music professionals and take part in workshops and masterclasses throughout the year. You are also given opportunities to be engaged with a range of instrumental and choral ensembles.

Whether or not you decide to study music after A Level, this is an exciting course for any dedicated musician.

The programme includes a Performance Recital; a taught Composition unit, assessed through coursework; and a course of Listening, History and Analysis leading to examination. A significant

amount of preparation and support is given to every student through an individually tailored programme.

## Do I need any particular subjects, skills or interests?

It is advised that you have achieved a minimum of Grade 4 (or equivalent) on at least one instrument (or voice) and in Music Theory. Where this is not the case, advice should be sought prior to enrolment from the Head of Music.

## Will I take part in any study visits/fieldwork?

The Department runs national and international tours with the College ensembles, regular trips to universities and visits to some of the finest concert halls to meet professional musicians and hear the set works.

## What can I do after the course?

The A Level course provides an academic and practical grounding for both higher education and professional music opportunities and is a necessary prerequisite for the majority of music degrees. It is suited equally to students



# Musical Theatre

Examination Board: Pearson

## What does the course involve?

This is a two year practical course for those who have experience and are interested in developing song, dance, and choreography skills for musicals.

You will study the genre of Musical Theatre as a whole from the 1920s through to today. There are a number of assignments to complete with the majority being practical and the remainder written.

You will be expected to plan, rehearse, and perform aspects of musicals throughout the year. These performances will form the basis of half-termly assessments alongside a written research project into chosen examples of the genre.

Here are some examples of the course units studied:

### Year One

- ▶ *Singing Skills for Actors and Dancers*
- ▶ *Dance Performance*
- ▶ *Musical Theatre Performance*

### Year Two

- ▶ *Movement in Performance*
- ▶ *Principles of Acting*
- ▶ *Performing to an Audience*

## Do I need any particular subjects, skills or interests?

The course requires you to have previous experience in the performance of musicals and expects a standard of singing, dancing and acting skills that will allow you to access Level 3 training. Course entry is by audition but the course will offer expert coaching in dancing, singing and acting.

## Will I take part in any study visits/fieldwork?

The year will culminate in a final assessed project of a small scale musical, where students will be expected to create a performance, plan and publicise it, then perform it in College.



## What can I do after the course?

This is a practical course, focusing on the development and refinement of singing, acting and dancing skills and how they contribute to the telling of a story to an audience. It will complement your Level 3 qualifications and help you progress in this field to higher education.

Past students have gone on to study musical theatre courses at the following institutions:

- ▶ Arts Educational Schools, London
- ▶ Bird College of Dance, Sidcup
- ▶ Liverpool Institute of Performing Arts (LIPA)
- ▶ Millennium Performing Arts College, London
- ▶ Performance Preparation Academy (PPA), Guildford
- ▶ SLP College, Leeds
- ▶ The Urdang Academy, London

as well as many other university courses.

**Please note, this course specification may change, therefore, please check the College website for the most up to date information.**  
[www.hereford.ac.uk](http://www.hereford.ac.uk)

# Philosophy & Ethics

Examination Board: Eduqas



## What does the course involve?

Philosophy & Ethics involves learning about the Philosophy of Religion and Moral Philosophy and the study of aspects of the world religion of Christianity. Examples of areas you will study include the classical arguments for and against God's existence; the problem of evil for religious believers; psychological and scientific responses to religious belief and the rise of new atheism. In addition, we will consider religious experience and the meaningfulness of religious language, examining and evaluating the views of ancient and modern scholars.

You will consider some of the classic theories of morality, ranging from deontological to teleological approaches. You will apply these to modern ethical issues including medical and sexual ethics, immigration, capital punishment, animal experimentation and nuclear weaponry. You will question whether we are free or determined and the implications this has on moral responsibility.

You will study the religious figures, sacred texts and practices of Christianity, examining the nature of the Christian God, for example as Father or Mother. You will assess Christian diversity in festivals such as Christmas and Easter. You will analyse and evaluate religious concepts such as the Trinity and Atonement and consider Christian religious life and social developments such as Liberation and Feminist Theology.

You will learn to critically analyse and assess evidence and arguments, engage in coherent debate and discussion, to construct cogent arguments and formulate your own conclusions on contentious issues. Philosophy & Ethics will train you to read critically, analyse and evaluate arguments, discern hidden assumptions and construct sound and valid arguments, expressing yourself clearly and precisely in both speech and writing.

**Please note that the world religion that underpins this course is Christianity.**

## How will I be assessed?

Internal assessment is primarily by written essay. External assessment is by three, two hour written examinations in the summer term of your second year:

Paper 1: *A Study of Christianity*  
Paper 2: *Philosophy and Religion*  
Paper 3: *Religion and Ethics*

You will be required to write two full essay responses for each individual examination exhibiting a high level of academic rigour:

Knowledge and Understanding  
(40% of the assessment)

Analysis and Evaluation  
(60% of the assessment)

## Do I need any particular subjects, skills or interests?

We assume no previous knowledge of the subject but you do need to be able to write extensively and enjoy reading, be prepared to study independently, have the ability to be challenged, to cope with difficult concepts, to engage in discussion accepting new ideas and ways of thinking. You will need to be prepared to work hard both inside and outside of lessons. You will need a grade 6 or B in either GCSE English Language or Literature.

## Will I take part in any study visits/fieldwork?

There will be opportunities for students to attend conferences either at College or at other venues, throughout the course, delivered by subject specialists.

## What can I do after the course?

Philosophy & Ethics can lead to a very wide range of courses in higher education such as PPE, Theology, Philosophy, Religious Studies and it stands as a very valued academic qualification. The skills gained in the study of this course can help you excel in fields as varied as law, business, medicine, journalism, politics, human resource management, teaching, social work and all aspects of social and community work, for example, the police force or probation service.

# Physical Education

Examination Board: OCR

## What does the course involve?

This course looks at Physical Education from a theoretical perspective with some applied practical elements. You need to be aware that the opportunity for practical performance is limited within the delivery of this programme.

You will have four lessons per week and will be expected to supplement your learning with independent study. This study is a compulsory part of the programme and is structured into regular directed study tasks.

This A Level provides you with an informed scientific and human understanding of key issues in Physical Education today. Delivery is centred on three key theory units:

- ▶ *Physiological Factors Affecting Performance*
- ▶ *Psychological Factors Affecting Performance*
- ▶ *Socio-Cultural Issues*

The Physiology unit has the heaviest weighting and this course includes a substantial science element.

A Level Physical Education has a strong academic focus and the course is arranged to help support you in learning and applying the required content. The A Level will be assessed by three examinations at the end of the two year programme.

It is essential that you are a competent practical performer. The practical assessment contains performance within a competitive environment and a verbal evaluation and analysis of performance. Both hold equal weighting and provide 30% of the final grade.

## Do I need any particular subjects, skills or interests?

The entrance requirement is a grade 5 or B in GCSE Science and having GCSE Physical Education would be beneficial. A portfolio of evidence of practical competency will also be required and



you will need to sign a learner contract in relation to regular participation.

## Will I take part in any study visits/fieldwork?

There are no compulsory visits, but you may have the opportunity to attend events, conferences and lectures.

## What can I do after the course?

A Level Physical Education will enhance your prospects if you are considering a career in sport, leisure and recreation and will allow access to sport related degrees.

It also has a wider currency and can be used to aid progression into non sport disciplines.



# Physics

Examination Board: AQA



## What does the course involve?

At its heart, Physics is about understanding how and why things behave as they do. Physics is vital to developments in the modern world, from Space Science to Nanophysics, from medical treatments to mobile phones; Physics makes an impact on virtually every area of our lives. Studying Physics offers a challenging but rewarding route to understanding the world around us.

You are expected to use the written and electronic resources available to you to develop your understanding of basic concepts outside of lessons. Lessons will concentrate on applying these concepts to explain observations and solve problems, particularly in unfamiliar situations. The course content and its assessment is as follows:

### Year One

- ▶ *Measurement and Their Errors*
- ▶ *Particles and Quantum Physics*
- ▶ *Waves*
- ▶ *Mechanics and Materials*
- ▶ *Electricity*

### Year Two

- ▶ *Further Mechanics and Thermal Physics*
- ▶ *Fields (Electric, Magnetic, Gravitational) and Their Consequences*
- ▶ *Nuclear Physics*
- ▶ *Astrophysics*

The A Level will be assessed by three, two hour examinations at the end of the two year programme. Each examination contributes one third of the overall A Level mark. There is no coursework or practical examination.

Although there is no practical examination, practical skills will be regularly assessed by the tutor during the course, who will award a final pass or fail grade at the end. This will be shown as a separate line on your examination certificate. This practical assessment does not contribute towards your final A Level mark.

You will be loaned a Physics textbook and question book; revision guides will be available from the Library. You will

need your own scientific calculator, file and 30cm ruler.

## Do I need any particular subjects, skills or interests?

The entrance requirements are a grade 6 or B in Mathematics and a grade 5 or B in GCSE Combined Science or equivalent, or two separate Sciences including Physics.

## Will I take part in any study visits/fieldwork?

There are no compulsory visits but speakers are often invited to College to give presentations.

## What can I do after the course?

Although Physics underpins careers in engineering and technology, the analytical and problem solving skills you develop are also highly valued in career areas not necessarily directly related to Physics, for example, management, financial services, law and the civil service.

You will gain a qualification in a highly regarded facilitating subject that will enable you to access many degree courses, apprenticeships and employment. Please note that although you don't need to take A Level Mathematics in order to take A Level Physics, if you wish to study Physics or Engineering at university you must also have A Level Mathematics.

## A Level

# Politics

Examination Board: Pearson

*"A change is brought about because ordinary people do extra-ordinary things."*

Barack Obama

Fed up of politicians? Do you like to argue? Whether we like it or not Politics has an effect on all of us. The taxes we pay, the schools and colleges we attend and work in, the National Health Service, the decision to have a nuclear deterrent, are all the result of political decisions. Consequently, the study of Politics will help you to better understand the processes by which such decisions are made and hopefully make you realise that you matter and can change things.

### What does the course involve?

Politics is the study of how we are governed. This means that we look at how we elect MPs and form governments. We also study how Parliament works and possible reforms, the role of judges in the area of civil liberties, the role of the Prime Minister and the Cabinet and the role and philosophy of the main political parties.

Politics is a subject that deals with argument and debate whilst also emphasising the current - How should the Government respond to the threat of terrorism? Should it be allowed to intercept our e-mails? Is the Prime Minister too powerful or too weak? Should the United Kingdom have a hard or soft Brexit? - These are just a few of the issues that are looked at. We will explore the core ideas, doctrines and theories of the main political parties i.e. conservatism, liberalism and socialism.

In the second year we study American Politics. Again, the emphasis is on the contemporary. For example, examining Trumps first 100 days in office or looking at the debate on gun control and examining why it has been so difficult to change anything. This involves looking



*"Just because you do not take an interest in politics doesn't mean politics won't take an interest in you."*

Pericles

at the way Congress works and at the power of the National Rifle Association. In addition to studying elections, parties, the President etc., we also study other issues such as civil rights, civil liberties, immigration and the politics of abortion.

### Do I need any particular subjects, skills or interests?

There are no specific entry requirements for the study of Politics. However, an ability to write clear and logical English and an interest in current affairs and what is in the news would be an advantage.

### Will I take part in any study visits/fieldwork?

Each year we take a trip to London to visit the Houses of Parliament and the Supreme Court. Previously we have taken a group of students to Washington DC and New York.

### What can I do after the course?

Politics is highly regarded by employers and universities. It is a traditional subject with a strong emphasis on writing and analytical skills. Students from Hereford Sixth Form College who have studied Politics have gone into careers such as journalism, law, the armed forces, police, business and the media to name a few.

# Psychology

Examination Board: AQA



## What does the course involve?

Psychology can be defined as the scientific study of behaviour and the mind. It includes consideration of both humans and animals and of normal and abnormal behaviour.

Psychology deals with scientific research. This includes studying theories and considering the relevance of research studies.

The main topics in Year One include:

*Research Methods and Statistics in Psychology*

*Memory and Eye-Witness Testimony*  
Models of memory, forgetting and eye witness testimony

*Attachment*  
Explanations of attachment and maternal deprivation

*Bio Psychology*  
The nervous system, endocrine system and the fight or flight response

*Conformity and Obedience*

*Explaining and Treating OCD, Depression and Phobias*

In Year Two, you will study:

*Research Methods and Statistics in Psychology*

*Approaches, Issues and Debates in Psychology*

*Aggression*  
Biological, evolutionary and social psychological explanations of aggression.

*Gender OR Relationships*  
Biological and psychological factors in gender development OR explanations of the formation, maintenance and breakdown of romantic relationships.

*Schizophrenia*  
Biological and psychological explanations of schizophrenia.  
Psychological and biological treatments for schizophrenia.

A Level Psychology includes the study of relevant research methods, investigation design, data analysis and data presentation. You will develop an understanding of potential ethical issues in Psychology and ways in which Psychologists deal with these issues.

The vast majority of students taking this

subject at A Level not only find that they learn a great deal from it but also that it is enjoyable. Psychology will help you understand yourself and others in many ways. It will allow you to challenge the stereotypes and 'quick fix' answers often provided by the media to issues such as mental health and the effect of violent videos on children's behaviour.

Assessment is through examination during the summer term.

## Do I need any particular subjects, skills or interests?

You are not expected to have previous knowledge of this subject but must meet the College minimum entry requirements for the A Level programme and have at least a grade 5 or B in GCSE English, Mathematics and one science.

To succeed in Psychology, you should be able to write clearly and coherently and have basic mathematical skills in order to analyse data. The Psychology specification complies with the subject criteria for Science.

## Will I take part in any study visits/fieldwork?

There are no compulsory visits, but you will have the opportunity to attend conferences and lectures.

## What can I do after the course?

For some students this may be the first step in a career in Psychology, such as a clinical, educational, occupational or sports psychologist. Others have gone on to study a wide range of subjects to degree level, including law, medicine, politics and English. An A Level in Psychology is well regarded by most employers, especially in areas that are 'people orientated', for example, teaching, nursing and social work.



# Psychology (Applied)

Examination Board: Pearson

## What does the course involve?

The qualification consists of a combination of continual assessment through written assignments and examinations, which are:

### *Psychological Approaches and Applications (examined)*

This is an examined unit on the cognitive, social, learning and biological approaches in psychology. Application of these approaches in psychology. Application of these approaches to aggression, business and gender identity.

### *Conducting Psychological Research (coursework)*

This involves producing reports on the importance of research and a pilot study.

### *Health Psychology (examined)*

This module examines lifestyle choice and health-related behaviour, theories of stress and addiction and promotion of positive behavioural change.

### *Introduction to Psychopathology (coursework)*

This involves examining the causes, types and characteristics of mental disorders and exploring professional approaches to the treatments.

## Do I need any particular subjects, skills or interests?

Beyond the Level 3 College entry requirements there are no specific entry requirements and the course assumes that you have not studied the subject before. However, you will need to be organised and have the ability to work independently and meet regular deadlines.

## Will I take part in any study visits/fieldwork?

Although not compulsory, there will be an expectation for you to take part in relevant extra curricular activities (ie work experience, talks, debates) to support the vocational aspects of the course.



## What can I do after the course?

Taken alongside other Level 3 courses, this course provides entry qualifications for a wide range of degree courses. For example, if you took this course alongside an A Level in Biology you could qualify for a BSc in Education and Child Psychology.

# Sociology

Examination Board: AQA



## What does the course involve?

Sociology is the study of how society works. So if you are interested in people or if you want to understand what is happening in the world, this is the course for you. Sociology looks at how society operates, why problems arise and how we can solve them.

By studying Sociology you can develop a greater understanding of the society and processes that shape our behaviour.

During the course you will develop the ability to debate ideas and communicate them in writing.

The main topics in Year One include:

### *Families and Households*

Has childhood improved in the last 50 years? Why is marriage in decline? Why are women having less children now than before?

### *Education*

Is the education system fair? Does it prepare us for work? Why are girls outperforming boys?

### *Research Methods*

How should we study society? Can you

study people scientifically?

In Year Two you will study:

### *Sociological Theory*

Is society fair? Do we get equal chances in life? Is the way we behave a result of how others see us?

### *Crime and Deviance*

Why do people commit crime? Is it a rational choice? Why do women commit less crime?

### *Mass Media*

Is the media brainwashing us? Does it make us more violent? What affect do social networking sites have on our lives?

The current assessment pattern is as follows:

### *Education with Theory and Sociological Methods*

(2 hours - 33.3% of A Level)

### *Families and Households*

(2 hours - 33.3% of A Level)

### *Crime and Deviance with Theory and Sociological Methods*

(2 hours - 33.3% of A Level)

## Do I need any particular subjects, skills or interests?

We assume no previous knowledge of Sociology but you do need the ability to cope with abstract ideas and to produce good written English, therefore, you must have at least a grade 4 or equivalent in GCSE English.

## Will I take part in any study visits/fieldwork?

There are no compulsory visits, but you will have the opportunity to attend conferences and lectures.

## What can I do after the course?

Sociology links to several other subjects for example: Psychology, Law, Politics, Geography and Biology. Sociology also forms part of many vocational qualifications for example, in nursing, teaching and social work.

Sociology is also studied as part of the training for many professions, for example, business management, advertising, journalism, prison work, law and the police.

# Spanish

Examination Board: AQA

## What does the course involve?

The course aims to develop high levels of competence in understanding, speaking and writing Spanish and a deeper knowledge of Spanish culture and civilisation and that of Latin America.

### Subject Content

Over the two years you will study:

- ▶ *Social Issues and Trends*
- ▶ *Political and Artistic Culture*
- ▶ *Literary Texts and Film*
- ▶ *Grammar*

The work is presented in context through newspaper and magazine articles, radio and television programmes, film, video and the Internet.

Spanish makes you think. It encourages you to question your own ideas, put your point of view across and offers you the chance to understand Spanish and Latin American society and culture more deeply. Spanish is a challenging but highly rewarding subject.

Learning languages helps develop communication and problem-solving skills and gain independence, flexibility and organisational skills - all qualities that employers value. There are many areas of work in which languages can be a real asset.

Spanish will also help to develop your confidence, your social skills and awareness of Hispanic culture.

You will be expected to go over material covered in class every day to build your knowledge of the language and vocabulary. You will write short essays on the topics you study.

It is essential to maintain full and detailed vocabulary and grammar notes. There are weekly tests, comprehension and grammar exercises, translations and the preparation of texts for classroom study or oral presentation.

### Assessment

Paper 1: Listening, Reading and Writing (50% of A Level)



Paper 2: One Text and One Film Essay (20% of A Level)

Paper 3: Oral (30% of A Level)

### Do I need any particular subjects, skills or interests?

At A Level it is important to read widely and have an interest in how language works - this applies to English too! You will develop and express opinions on wide-ranging topics including the current social issues, political life and artistic culture in the Spanish-speaking world. You need a grade 6 or B, or above, in GCSE Spanish and a grade 6 or B, or above, in both English Language and English Literature and a genuine level of interest and commitment to Spanish language and culture.

### Will I take part in any study visits/fieldwork?

You are encouraged to take part in a week-long residential study visit to Seville taught by native speakers (costing approximately £800 in recent years, which includes full board and lodging).

Financial help may be available in cases of hardship.

### What can I do after the course?

The knowledge of a European language increases your career prospects. Spanish can help you gain access to top jobs in business, banking, finance, journalism, law, public relations, travel and the civil service. There are opportunities in tourism, the media, the diplomatic service, translation and interpreting.

Spanish is spoken by 400 million native speakers in over 20 countries. Spanish is an important language in the fields of technology and business.

Recent data from Oxford University shows that 93% of Modern Language graduates go straight into employment or further study compared to an 87% average in other subjects.



# Sport & Exercise Science

Examination Board: Pearson



## Do I need any particular subjects, skills or interests?

You will need a grade 4 or C in GCSE English, Mathematics and Science or a BTEC First/Certificate/Diploma in a related subject with Merit or above, or equivalent.

## What can I do after the course?

The Extended Certificate can be used to help progression into further sport related study or as general currency for access to other higher education courses.

The BTEC Extended Certificate in Sport & Exercise Science is a new qualification which is aimed at students who are looking to progress into sports employment, but it also provides currency for progression into Higher Education.

The course will need to be combined with two other programmes to form a full programme of study for Level 3. These programmes could be a combination of other BTEC or A Level courses.

## What does the course involve?

The course will require students to complete four units over two years.

This course will also be available to fast track where students can complete four units over one year.

### Year One

#### Functional Anatomy

- ▶ 90 guided learning hours
- ▶ Examined

#### Coaching for Performance and Fitness

- ▶ 90 guided learning hours
- ▶ Internal assignments

### Year Two

#### Applied Sport & Exercise Psychology

- ▶ 120 guided learning hours
- ▶ Controlled assessment

#### Specialised Fitness Training

- ▶ 60 guided learning hours
- ▶ Internal assignments

Students will have the opportunity to resit external assessments once only.

In order to pass the qualification students will be required to pass ALL units.

If you would like to look at these units in more detail, scan the QR code for the course specification



# Sport

Examination Board: Pearson

This course is a detailed study of sport which looks at the theoretical aspects within sport and the sports industry, with some applied practical units. It will need to be combined with one other programme to form a full programme of study for Level 3. The additional programme could be another BTEC or A Level course.

## What does the course involve?

You will be required to complete nine units of work across a range of topics within sport and sports industry. These units will be assessed using a variety of methods, which will include examination, controlled assessments and assignments:

### Year One

*Anatomy and Physiology*  
(external assessment)

*Practical Sports Performance*  
(internal assessment)

*Sports Leadership* (internal assessment)

*Skill Acquisition* (internal assessment)

*Principles and Practices for Outdoor and Adventurous Activities* (this will include a compulsory day trip to local facilities)

### Year Two

*Fitness Training and Programming*  
(external assessment)

*Professional Development in the Sports Industry* (internal assessment)

*Investigating Business in Sport*  
(external assessment)

*Research Methods* (internal assessment)



You need to be aware that studying the BTEC National Diploma is intense and will require full commitment to both practical activity and completion of assignment work. In order to pass the qualification you will be required to pass ALL units.



You will become a more organised individual through the high level of self-discipline required to meet the stringent assignment deadlines; you will also benefit from having exposure to a small amount of final examinations.

You will develop the ability to question and research associated topics and will be able to access support both within and outside the College environment.

Your academic profile will begin to develop early in the course and all work that you complete will contribute to your final grade. It is vital therefore that you are prepared to work hard for the duration of the two years.

Due to the complex nature of the course and assessment, you will be supported through a dedicated tutorial system, which is designed to maximise your chances of achieving your target grade and chosen progression route.

## Do I need any particular subjects, skills or interests?

You will need a grade 4 or C in GCSE English, Mathematics and Science or a BTEC First/Certificate/Diploma in a

related subject with Merit or above, or equivalent. You will also need to be actively participating in at least one sport.

You will also be required to take part in an interview with the Head of Physical Education or member of the team.

## Will I take part in any study visits/fieldwork?

Compulsory field trips are arranged as part of the course within the BTEC units, costing approximately £150.

## What can I do after the course?

This qualification has wide currency for both higher education and employment and is universally accepted. Students can expect to gain competitive first choice offers from the major higher education establishments.

Possible careers include all sport-related careers, for example, coaching and sports development, teaching and coaching and sports therapy, as well as the armed forces, the police and fire brigade.

# Sport

Examination Board: Pearson



This course is a detailed study of sport which looks at the theoretical aspects within sport and the sports industry, with some applied practical units. This course can be used to gain access to higher education as a stand alone qualification.

## What does the course involve?

You will be required to complete fourteen units of work across a range of topics within the sport and the sports industry. These units will be assessed using a variety of methods, which will include examination, controlled assessments and assignments:

### Year One

*Anatomy and Physiology*  
(external assessment)

*Practical Sports Performance*  
(internal assessment)

*Sports Leadership* (internal assessment)

*Skill Acquisition* (internal assessment)

*Development and Provision of Sport and Physical Activity* (external assessment)

*Coaching for Performance*  
(internal assessment)

*Principles and Practices for Outdoor and Adventurous Activities* (this will include a compulsory day trip to local facilities)

*Work Experience in Active Leisure* (a period of work experience is compulsory to complete this module)

### Year Two

*Fitness Training and Programming*  
(external assessment)

*Professional Development in the Sports Industry* (internal assessment)

*Investigating Business in Sport*  
(external assessment)

*Research Methods* (internal assessment)

*Sports Psychology* (internal assessment)

*Fitness Testing* (internal assessment)

This course is intense and will require full commitment to both practical activity and completion of assignment work. In order to pass the qualification you will be required to pass ALL units.

You will become a more organised individual through the high level of self-discipline required to meet the stringent

assignment deadlines; you will also benefit from having exposure to a small amount of final examinations.

You will develop the ability to question and research associated topics and will be able to access support both within and outside the College environment.

Your academic profile will begin to develop early in the course and all work that you complete will contribute to your final grade. It is vital therefore that you are prepared to work hard for the duration of the two years.

Due to the complex nature of the course and assessment, you will be supported through a dedicated tutorial system, which is designed to maximise your chances of achieving your target grade and chosen progression route.

## Do I need any particular subjects, skills or interests?

You will need a grade 4 or C in GCSE English, Mathematics and Science or a BTEC First/Certificate/Diploma in a related subject with Merit or above, or equivalent. You will also need to be actively participating in at least one sport.

You will also be required to take part in an interview with the Head of Physical Education or member of the team.

## Will I take part in any study visits/fieldwork?

Compulsory field trips are arranged as part of the course within the BTEC units, costing approximately £150.

## What can I do after the course?

This qualification has wide currency for both higher education and employment and is universally accepted. Students can expect to gain competitive first choice offers from the major higher education establishments. Possible careers include all sport-related careers, for example, coaching and sports development, teaching and coaching and sports therapy, as well as the armed forces, the police and fire brigade.



# Statistics

Examination Board: Pearson

## What does the course involve?

In order to gain an understanding of the world around us, we need to be able to compare between what has been observed and what is expected. Almost every job in the world requires a degree of data collection and analysis, followed up by the interpretation of the numerical evidence: this is the nature of Statistics.

The course builds on descriptive statistics such as finding averages and summarising data. This leads onto inferential statistics, where you test whether an observed result is significantly different from what might be expected. The role of technology in calculating statistics is heavily relied on and the application to a wide range of situations is explored.

A Level Statistics focuses on the interpretation of the numbers, rather than how to calculate them, providing an insight into real world situations with no definitive answer.

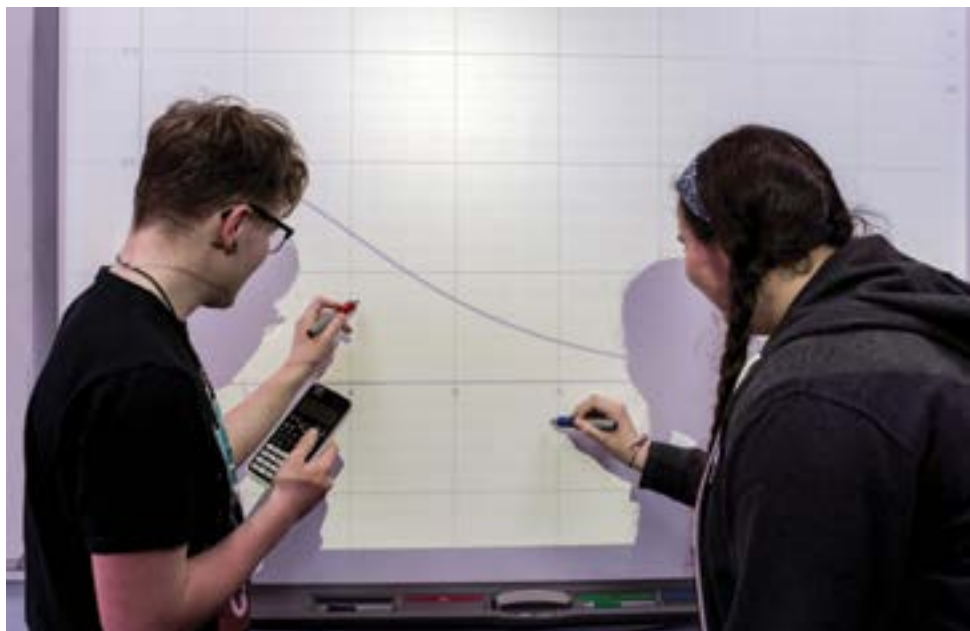
The Pearson A Level course covers the following topics:

- ▶ **Paper 1: *Data and Probability***  
Using data collection, handling and analysis to determine probabilities of events occurring.
- ▶ **Paper 2: *Statistical Inference***  
Testing hypotheses about populations based on statistics calculated for samples.
- ▶ **Paper 3: *Statistics in Practice***  
Applying statistical techniques to a wide range of real-world situations, with critical analysis of published data.

Each paper is equally weighted.

## Do I need any particular subjects, skills or interests?

You should normally have at least a grade 4 or C in GCSE English and a grade 5 or B in GCSE Mathematics. There will be an element of using software (databases and spreadsheets) and a large amount of critical thinking.



To get the most out of this course, you should also be curious or interested in the real world and how statistics is used in other areas of study such as medicine, politics, business or psychology. You will definitely need an open mind!

## Will I take part in any study visits/fieldwork?

There are no compulsory visits, but occasionally there are opportunities for lectures by visiting speakers. There will be an element of primary data collection and research required.

## What can I do after the course?

A Level Statistics is an excellent supporting subject for Biology, Education, Geography, Politics, Psychology, Sociology, Sports Science, etc.

You develop the ability to follow methods and processes accurately and interpret the results of numerical evidence - this is a very transferable skill in a wide range of contexts.

Almost every career will require the analysis of data.

# Travel & Tourism

Examination Board: Pearson



## What does the course involve?

This course is for those wishing to learn about the travel and tourism industry as part of a balanced programme of A Level and/or BTEC study.

The course is 100% coursework and consists of six units. The final choice of units is still under discussion so please check the College website for the most up to date information.

Four compulsory units are assessed internally and include:

- ▶ *Investigating the Travel & Tourism Sector*
- ▶ *The United Kingdom as a Destination*
- ▶ *The Business of Travel & Tourism*
- ▶ *Customer Service in Travel & Tourism*

## Do I need any particular subjects, skills or interests?

There are no specific entry requirements and the course assumes that you have not studied the subject before. You just need to be organised.

## Will I take part in any study visits/fieldwork?

A variety of trips and visits will be organised, some of which will be compulsory. These include:

- ▶ theme park
- ▶ local tourism visits
- ▶ Bristol Zoo
- ▶ Big Pit
- ▶ PGL
- ▶ Blackpool
- ▶ a short haul destination - London or Europe
- ▶ a long haul trip - New York

## What can I do after the course?

The skills gained during this course will help to prepare you for Further or Higher Education. It will be particularly relevant for progression to travel, business or management related degrees.



## Level 2 Courses





# Overview of Level 2 Courses

Hereford Sixth Form College offers a one year Level 2 programme for students wishing to improve their grades or take extra subjects.

The course consists of a range of subjects especially chosen to allow you to retake English and Mathematics if necessary but also to take new subjects which are designed to prepare you for future A Level or vocational courses.

All students on the programme study English and/or Mathematics if they have not already gained at least a grade 4 or C.

In addition to the enrichment opportunities offered to all students via the **Impact** programme, the College provides careers guidance, tutorials and confidence-building activities specifically aimed at our GCSE students.

The College has a national reputation for the quality of its work with students who wish to improve their Level 2 grades. Pass rates are significantly above those achieved by students who retake in other institutions.

On completion of the course students continue with education or training or gain employment.

## Your Programme of Study



**Scan the QR code to find out what Zara has to say about her Level 2 programme:**



## Destination of GCSE Leavers in 2018

Continuing at Hereford Sixth Form College	59%
Studying at other FE colleges	18%
Employment	9%
Other	5%
Not known	9%

# GCSE English Language and Level 2 Functional Skills in English

Examination Board: Eduqas

## GCSE English Language

### What does the course involve?

The GCSE in English Language offers the opportunity for developing the complementary skills of reading, writing, speaking and listening. You will learn to write for different audiences and purposes in a variety of styles. You will develop your skills through close analysis of texts and will respond to a wide range of sources which deal with modern world themes and issues. You will develop your ability to use standard English.

As part of the assessment you are expected to complete two external examinations which test both reading and writing skills, one of the extracts is pre 20th Century. There are two examinations in June with 50% reading, 50% writing. 20% of the writing marks are for accurate spelling, punctuation and grammar and the use of a range of vocabulary and sentence structures.

Some students are entered for the November resit after baseline testing.

There is a speaking and listening component. This is reported separately on the results certificate and is not part of the examination. It is, however, required.

### Do I need any particular subjects, skills or interests?

The English Department takes particular care to provide a supportive, yet challenging environment in the classroom. Groups consist of around 20 students. There is a mix of individual, pair and group work.

### Will I take part in any study visits/fieldwork?

There are subject workshops available free of charge on two lunchtimes.

### What can I do after the course?

A GCSE in English Language at Level 4 is a minimum core requirement for the majority of higher education courses and also for many careers. It is a recognised measure of ability in key skills by employers. Many A Levels will require Level 5 or above.



## Level 2 Functional Skills in English

All GCSE English students will be assessed in early September. Those who are unlikely to reach Level 4 in one year will be enrolled on the Functional Skills course.

Functional Skills is a well regarded course which covers the same skills as GCSE, but is taught in smaller groups with an emphasis on improving literacy.

The course is designed to equip learners with the practical skills required in everyday life, education and the workplace. You will learn skills such as comparing the ideas and presentation of texts, writing for a specified audience and purpose, and communicating and adapting language. Functional Skills assessments are graded as either a 'pass' or 'fail'.

The course is taught using a similar style and content to GCSE English but with more emphasis on punctuation, grammar, spelling and oral communication.

There are opportunities to move from one course to the other throughout the year, or to be entered for both qualifications.

Students who take Functional Skills at the end of the first year, and achieve a Level 2 pass, can take the GCSE course the following year. All students achieving Level 3 or below in the summer GCSEs will automatically be enrolled on the Functional Skills course.

Functional Skills English is a mandatory requirement for apprenticeship programmes and must be passed before completion. In addition, Level 2 Functional Skills English is now being accepted at some universities as an equivalent/alternative to GCSE English, Level 4.

# GCSE Mathematics and Level 1/2 Functional Mathematics

Examination Board: Pearson/AQA



## What can I do after the course?

A Level 4/5 in Mathematics is an expected qualification for Higher Education courses and is viewed as key by many employers.

Mathematics underpins many branches of learning and has been fundamental in the development of the society in which we live. A basic level of numeracy is essential in almost all areas of work.

## Functional Mathematics

### What does the course involve?

This is a course for any student with a Level 2 or lower in GCSE Mathematics. It is aimed at developing the ability to use mathematical skills in everyday life. The course is focused on Mathematics in context, with students answering questions based on case studies or on real life situations.

### What can I do after the course?

Achieving both levels of Functional Mathematics will give students a mathematical qualification in useful mathematics and can serve as a stepping stone to further study at GCSE level.

## Foundation Level GCSE Mathematics

### What does the course involve?

This is normally a retake course that must be taken by students who have achieved a Level 3 in GCSE Mathematics.

This will be a fresh start to mathematics for students with teaching beginning without many assumptions of previous knowledge. The best way to prepare for the examinations in this course is to work hard towards all your tests, since these reflect the kind of questions you will get. Most students who do this move from a Level 3 to a Level 4 in one year.

There may be an opportunity for students studying A Levels at the College to attempt an intensive November resit course, however, due to the changing examination system, students must be confident in their abilities and be willing to dedicate themselves to their studies if they wish to be entered for this.



# Other Level 2 Programmes

Please note, this Level 2 course list may be subject to change. Please check the College website for the most up-to-date information.

As well as studying English and Mathematics we also offer nine additional Level 2 programmes. These subjects have been chosen to closely link with the key academic and vocational skills required to thrive on Level 3 courses or prepare you for the workplace.

## GCSE Biology

Examination Board: AQA



Biology is the fastest developing science, with GM Technology and Climate Change constantly in the news.

This course offers an insight into the many different aspects of Biology, including:

- ▶ *Cell Biology*
- ▶ *Anatomy & Physiology*
- ▶ *Genetics*
- ▶ *Ecology*

Due to the practical nature of the course it will suit you if you are looking to develop practical skills as well as learning theory.

## Level 2 Computer Games Development & Digital Graphics

Examination Board: OCR



This course offers the opportunity to learn how to create digital products including graphics and computer games. It also helps develop transferable skills such as research, planning and review, working with others and communicating creative concepts.

The hands-on approach has strong relevance to the way in which young people use technology. At the start of the course there is an opportunity to attend EGX which is the UK's biggest video games show.

The units studied are:

- ▶ *Pre-Production Skills*  
(written examination 1 hour and 15 minutes)
- ▶ *Creating Digital Graphics*  
(10 hours of practical assessments)
- ▶ *Designing a Game Concept*  
(10 hours of practical assessments)
- ▶ *Developing Digital Games*  
(10 hours of practical assessments)

## GCSE Current Affairs

Examination Board: AQA



This course is great for people who have an interest in politics, law and international relations.

You will investigate topical issues such as the rise of knife crime and the powers of the police, and whether the press are allowed to print stories about a celebrity's private life.

As well as learning about how our political system works e.g. what happens in a general election and what an MP's job is, you will also learn how to put an argument together in a persuasive way.

The *Active Citizenship* element means you will get a chance to find a way to bring about change in society in an area you are interested in, such as helping those in poverty or lowering the voting age in the UK.

This is a good course for anyone looking to go on to study *Criminology, Law, Politics* or *Sociology*. It will also be useful for careers in the police or local government.

# Other Level 2 Programmes

Please note, this Level 2 course list may be subject to change. Please check the College website for the most up-to-date information.

## Level 1/2 Enterprise

Examination Board: Pearson



The course is made up of three components, two of which are internally assessed and one externally:

- ▶ *Exploring Enterprises*  
(internally assessed - 30% of award)  
You will examine different enterprises to develop knowledge and understanding of the characteristics of enterprises and the skills needed by entrepreneurs.
- ▶ *Planning for and Pitching an Enterprise Activity*  
(internally assessed - 30% of award)  
You will explore ideas, plan and pitch a micro-enterprise activity to an audience and use feedback to review their business plan.
- ▶ *Promotion and Finance for Enterprise*  
(externally assessed - 40% of award)  
You will explore the different promotional methods used by enterprises and the factors that influence how enterprises identify and target their market.

## GCSE Film Studies

Examination Board: AQA



In an increasingly media saturated world, the study of film, in all its forms, still holds an integral place in our culture.

Film is an optical illusion that allows the viewer to be carried off into a fantasy world where our reactions can evoke happiness, fear, shock and sadness. These emotions generated by the movies we watch, often remain strong in our memory. We know it is not real yet we allow ourselves to become lost in the moment.

How is it that film manages to have such an effect on us and why do audiences identify with characters so much?

How does the film industry manage to design films which attract certain audiences?

These are just some of the questions that you will uncover in this one year GCSE course. It will appeal to anyone who has a keen interest in films past and present, the aesthetics of film and in the actual making of film. You will be expected to make your own short film for coursework.

It is perfect for those who want to understand how the film industry works, to learn how to analyse films and to discover and appreciate how films are created for their target audience.

## First Certificate Health & Social Care

Examination Board: AQA



This Level 2 course is equivalent to two GCSEs.

The course is designed for you if you have an interest in health and social care and wish to develop skills and learn the theory that can prepare you for further study and employment within the sector.

It is a practical course.

There are seven units. Two are externally assessed and five are internally assessed. The units are:

- ▶ *Human Lifespan Development*
- ▶ *Care Values*
- ▶ *Social Influences*
- ▶ *The Impact of Nutrition*
- ▶ *Healthy Living*
- ▶ *Effective Communication in Health & Social Care*
- ▶ *Human Body Systems and Care of Disorders*

# Other Level 2 Programmes

Please note, this Level 2 course list may be subject to change. Please check the College website for the most up-to-date information.

## GCSE Psychology

Examination Board: AQA



Have you ever wondered...

Why some people are successful and others aren't?

What makes us forget?

How a salesperson could use body language to persuade someone to buy a product?

What causes depression?

If so, then this is the course for you. You will learn about studies and theories into a range of topics including *Perception*, *Social Psychology* and *Psychological Problems*. You will gain an insight into some of the things that influence a person's mind and behaviour.

### Assessment

Paper 1: (50% of GCSE)

- ▶ *Memory*
- ▶ *Perception*
- ▶ *Development*
- ▶ *Research Methods*

Paper 2: (50% of GCSE)

- ▶ *Social*
- ▶ *Language, Thought and Communication*
- ▶ *Brain and Neuropsychology*
- ▶ *Psychological Problems*

## GCSE Sociology

Examination Board: AQA



This course offers you the unique experience to explore a variety of interesting social based topics including:

- ▶ *Studying Society*
- ▶ *Education*
- ▶ *Families*
- ▶ *Crime & Deviance*
- ▶ *Social Stratification*

## Level 2 Travel & Tourism

Examination Board: tbc



This course offers the opportunity to study one of the largest industries in the world.

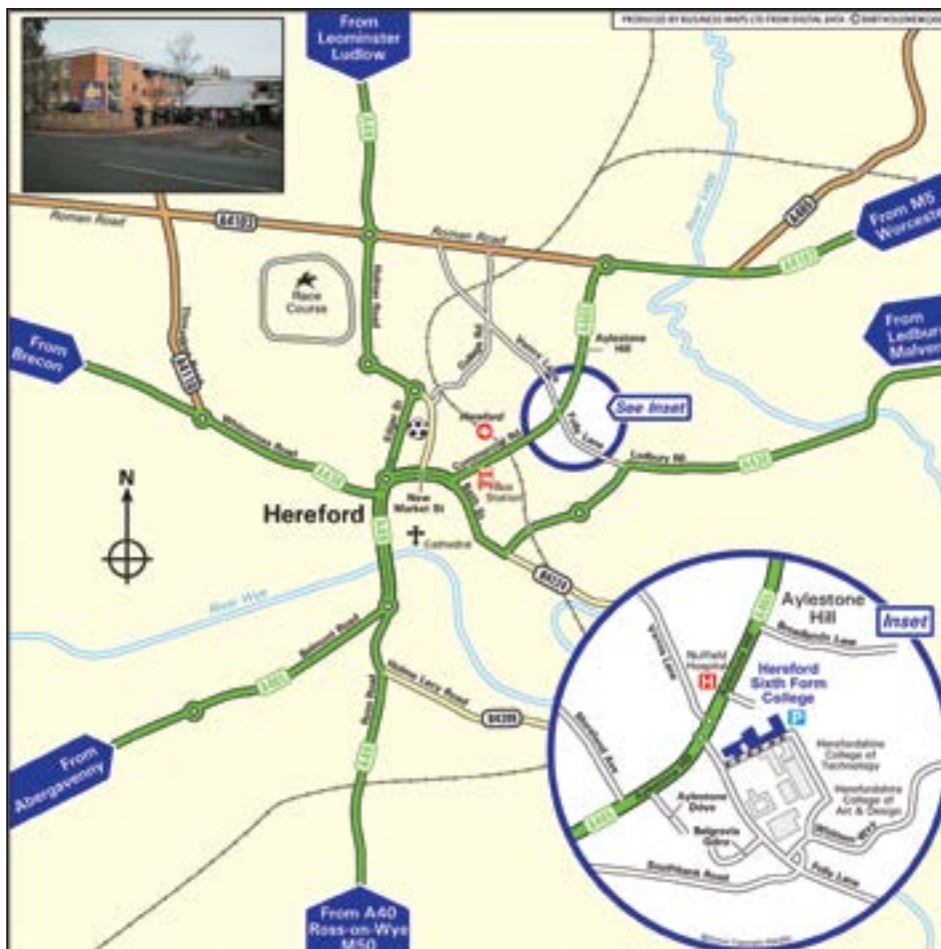
There are three units:

- ▶ *Customer Experience*  
(internal assessment)
- ▶ *The Business of UK Tourism*  
(external assessment)
- ▶ *Developing UK Tourist Destinations*  
(internal assessment)

There will be an opportunity for work-related learning and you will develop a range of skills including problem solving; project based research, development and presentation and the ability to work alongside other professionals in a professional environment.



# Location



## From North and East

Leave the M5 at Junction 7 (Worcester South). Follow Worcester A44 then left on to A4440. Follow signs for Hereford (A4103), follow this road for approx. 30 minutes, which will bring you into Hereford. At roundabout take first left into Aylestone Hill (A465). At top of Aylestone Hill - straight over first mini-roundabout and turn first left at second mini roundabout into Folly Lane. The College is located first left - look for the College signs.

## From South

Leave the M5 at Junction 8 (Ross on Wye/M50). Join M50. Leave M50 at Junction 2 - signed Hereford and Ledbury. Follow signs to Hereford (A438). Enter Hereford (past pub 'The Cock of Tupsley') continue to traffic lights at road junction. Turn right into Folly Lane (signed Hereford Colleges). At traffic lights in Folly Lane carry straight on (past Hereford College of Arts and Herefordshire & Ludlow College). Hereford Sixth Form College is on the right hand side - look for the College signs.

## Visitor Parking

A penalty scheme is in operation, therefore, please sign in at Reception, informing us of your car registration number.





**Hereford**  
SIXTH FORM COLLEGE



sowing the seeds for your future

## OPEN EVENTS

Register in **advance** at  
[www.hereford.ac.uk](http://www.hereford.ac.uk)

**Wednesday**

**23rd October 2019**

**5.00pm ~ 8.00pm**

**Saturday**

**8th February 2020**

**9.30am ~ 12.30pm**

**Thursday**

**30th April 2020**

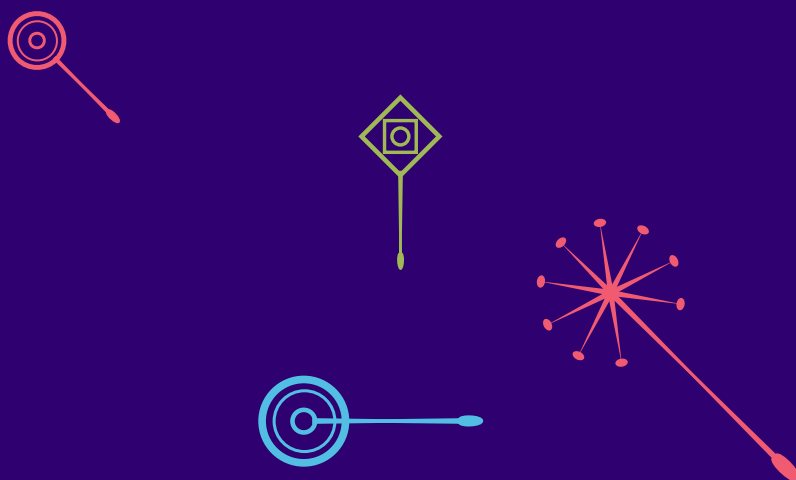
**5.30pm ~ 7.30pm**

**Hereford Sixth Form College**

Folly Lane, Hereford HR1 1LU

Tel: **01432 355166**

E-mail: [sixth-form@hereford.ac.uk](mailto:sixth-form@hereford.ac.uk)



Folly Lane, Hereford HR1 1LU

**T:** 01432 355166

**E:** [sixth-form@hereford.ac.uk](mailto:sixth-form@hereford.ac.uk)

**[hereford.ac.uk](http://hereford.ac.uk)**